



52ft, Neil Hudson, 1997, Traditional Style



BERTHS:

4



TOILET:

Thetford cassette



HEATING:

Webasto



SURVEY:

-



B.S.C:

-



BLACKING:

2016



ENGINE:

Kelvin K2



LAYOUT:

Standard

**Whilton
marina**

Whilton Locks, Near Daventry,
Northants, NN11 2NH

01327 842577

sales@whiltonmarina.co.uk

www.whiltonmarina.co.uk

**For further information please see
a member of the sales team.**

It is the responsibility of the buyer to ensure that all particulars given in the course of the purchase of the boat are accurate. Such particulars are intended only as a guide and do not constitute a term of any contract.



Boat Specification

Plating Specification	10/6/4
Flat, V-Hull or Keeled	Flat Hull
Fitted out By	Owner
Fixed Berths	Pullout cross
Additional Berths	L shape

Engine Specification

Engine Make	Kelvin K2
No. Of Cylinders	2
Keel, Water or Air Cooled	Raw Water Cooled
Gearbox Make	Kelvin
Aqua Drive	No
Bow Thruster	No
Diesel Tank Capacity	30 gallons

Hot Water & Heating Systems

Source of Hot Water	Engine
Central Heating	Webasto
Solid Fuel Stove	Yes
Water Tank Capacity	120 gallons
Material used	Stainless steel
Additional Systems	-

Electrical System & Components

12 Volt Lighting	Yes
240 Volt Landline	Yes
Inverter	1000w
Generator	-
Batteries	2 domestic 1 starter
Additional Systems	-

Bathroom Specification

Type Of Toilet	Thetford cassette
Bath Fitted	No
Separate Shower Fitted	Yes
Vanity Basin Fitted	Yes
Additional Systems	-

Kitchen Specification

Make & Model Of Cooker	Tricity Bendix
Separate Hob	-
Microwave Fitted	-
Make & Model Of Fridge	Lec
Gas, 12 volt or 240 volt	12 volt
Additional Systems	-

Fit Out Materials

- Insulation Used
- Types Of Wood Used
- Window Types
- Materials Used
- Bulls Eye, Pigeon Box or Houdini Hatch
- Exterior Doors
- Side Hatches
- Front & Back Covers

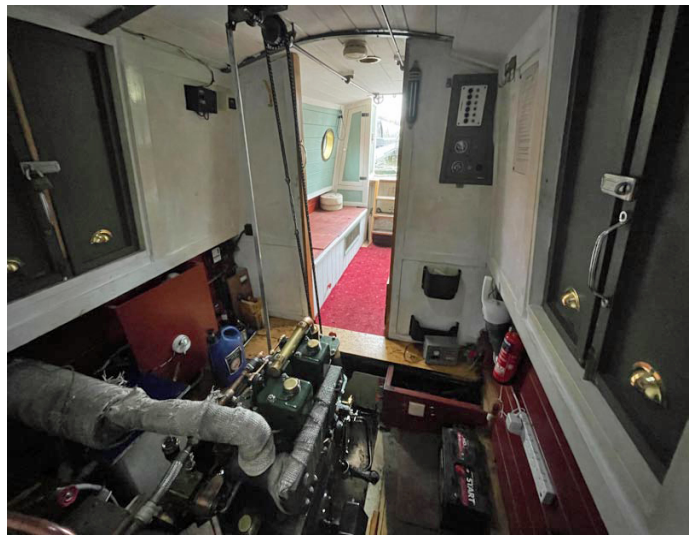
- Rockwool
- Ply
- Hopper
- Gold Anodised
- Pigeon Box
- Front - Wood, Back - Steel
- Yes
-

History Of Vessel

- Boat Safety Certificate
- Last Hull Blacking
- Anodes
- Further Maintenance
- Recent Survey
- Additional Information

-
- 2016
-
-
-
-





Whilton Locks, Near Daventry,
Northants, NN11 2NH
01327 842577
sales@whiltonmarina.co.uk
www.whiltonmarina.co.uk

**For further information please see
a member of the sales team.**

It is the responsibility of the buyer to ensure that all particulars given in the course of the purchase of the boat are accurate. Such particulars are intended only as a guide and do not constitute a term of any contract.

