



44ft, East West Marine, 2007, Cruiser Style



**BERTHS:**

Four



**TOILET:**

Pump Out



**HEATING:**

Webasto



**SURVEY:**

-



**B.S.C:**

Expires June 2022



**BLACKING:**

2018



**ENGINE:**

Yanmar Barrus  
Shire



**LAYOUT:**

Standard

**Whilton  
marina**

Whilton Locks, Near Daventry,  
Northants, NN11 2NH

01327 842577

[sales@whiltonmarina.co.uk](mailto:sales@whiltonmarina.co.uk)

[www.whiltonmarina.co.uk](http://www.whiltonmarina.co.uk)

**For further information please see  
a member of the sales team.**

It is the responsibility of the buyer to ensure that all particulars given in the course of the purchase of the boat are accurate. Such particulars are intended only as a guide and do not constitute a term of any contract.



## Boat Specification

Plating Specification	12/6/6/4mm
Flat, V-Hull or Keeled	Flat Hull
Fitted out By	East West Marine
Fixed Berths	Fixed Double
Additional Berths	L shape Convertible

## Engine Specification

Engine Make	Yanmar Barrus Shire
No. Of Cylinders	Three
Keel, Water or Air Cooled	Keel Cooled
Gearbox Make	PRM 150
Aqua Drive	-
Bow Thruster	No
Diesel Tank Capacity	40 Gallons

## Hot Water & Heating Systems

Source of Hot Water	Webasto and Engine
Central Heating	Webasto
Solid Fuel Stove	-
Water Tank Capacity	150 Gallons
Material used	Stainless Steel
Additional Systems	-

## Electrical System & Components

12 Volt Lighting	Yes
240 Volt Landline	Yes
Inverter	Phoenix Victron 3000 Watt
Generator	-
Batteries	Three Domestic + One Starter
Additional Systems	-

## Bathroom Specification

Type Of Toilet	Pump Out
Bath Fitted	-
Separate Shower Fitted	Yes
Vanity Basin Fitted	Yes
Additional Systems	-

## Kitchen Specification

Make & Model Of Cooker	Spinflo Midi Prima
Separate Hob	Country Leisure
Microwave Fitted	-
Make & Model Of Fridge	Vitrifridge fridge
Gas, 12 volt or 240 volt	12 Volt
Additional Systems	-

## Fit Out Materials

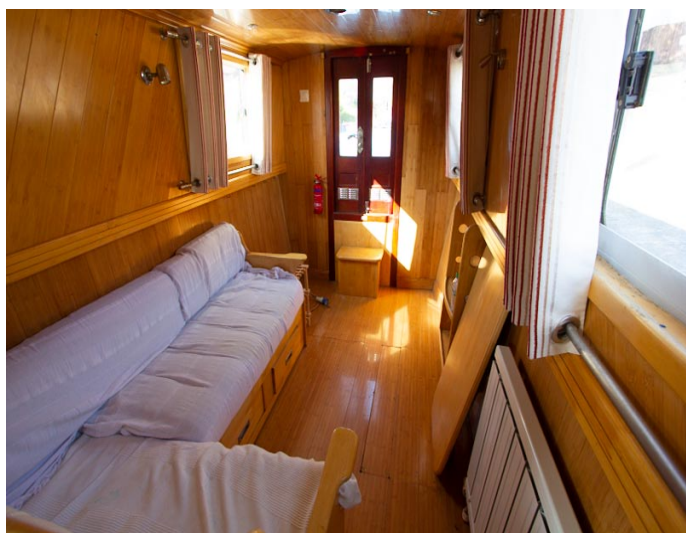
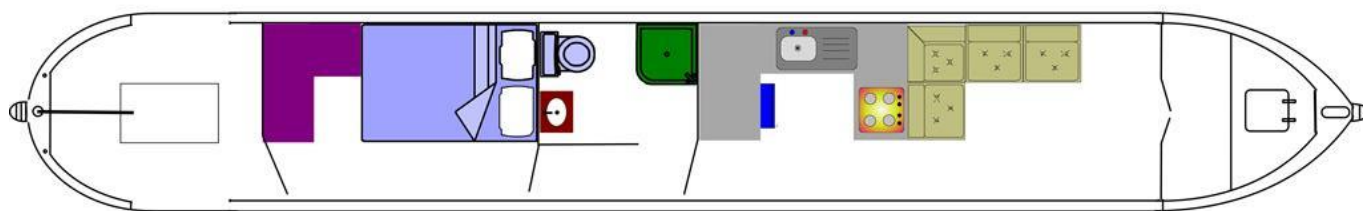
Insulation Used  
Types Of Wood Used  
Window Types  
Materials Used  
Bulls Eye, Pigeon Box or Houdini Hatch  
Exterior Doors  
Side Hatches  
Front & Back Covers

Spray Foam  
Bamboo  
Slideable  
Aluminium  
-  
-  
-  
-

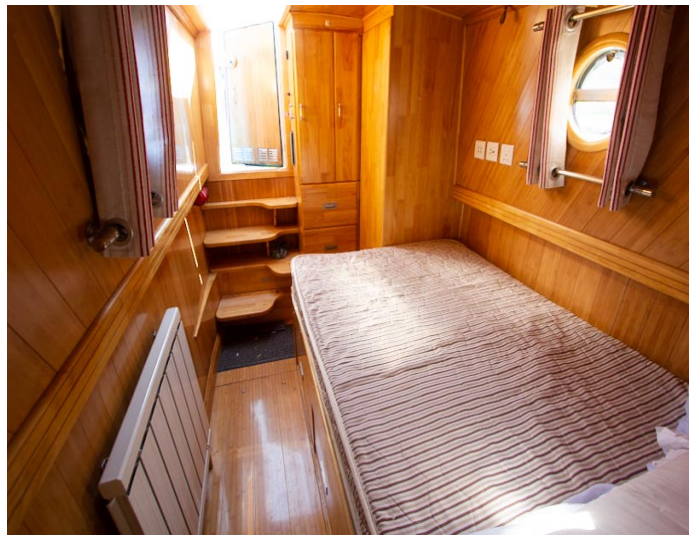
## History Of Vessel

Boat Safety Certificate  
Last Hull Blacking  
Anodes  
Further Maintenance  
Recent Survey  
Additional Information

Expires June 2022  
2018  
2018  
-  
-  
-







Whilton Locks, Near Daventry,  
Northants, NN11 2NH  
01327 842577  
sales@whiltonmarina.co.uk  
www.whiltonmarina.co.uk

**For further information please see  
a member of the sales team.**

It is the responsibility of the buyer to ensure that all particulars given in the course of the purchase of the boat are accurate. Such particulars are intended only as a guide and do not constitute a term of any contract.