



52ft, Stowe Hill, 1990, Traditional Style

**BERTHS:**

Two

**TOILET:**

Bucket

**HEATING:**

Alde

**SURVEY:**

Dec 2017

**B.S.C:**

Expires 2022

**BLACKING:**

2018

**ENGINE:**

BMC 1.8

**LAYOUT:**

Standard

Whilton
marina

Whilton Locks, Near Daventry,
Northants, NN11 2NH

01327 842577

sales@whiltonmarina.co.uk

www.whiltonmarina.co.uk

**For further information please see
a member of the sales team.**

It is the responsibility of the buyer to ensure that all particulars given in the course of the purchase of the boat are accurate. Such particulars are intended only as a guide and do not constitute a term of any contract.



Boat Specification

Plating Specification	10/6/4
Flat, V-Hull or Keeled	Flat Hull
Fitted out By	Stowe Hill
Fixed Berths	Fixed Double
Additional Berths	-

Engine Specification

Engine Make	BMC 1.8
No. Of Cylinders	Four
Keel, Water or Air Cooled	Keel Cooled
Gearbox Make	HBW
Aqua Drive	No
Bow Thruster	No
Diesel Tank Capacity	40 Gallons

Hot Water & Heating Systems

Source of Hot Water	Alde and Engine
Central Heating	Alde
Solid Fuel Stove	Morso Squirrel
Water Tank Capacity	150 Gallons
Material used	Integral steel
Additional Systems	-

Electrical System & Components

12 Volt Lighting	Yes
240 Volt Landline	Yes
Inverter	600w Inverter
Generator	-
Batteries	Three (new) domestic and one starter
Additional Systems	LED lighting

Bathroom Specification

Type Of Toilet	Bucket
Bath Fitted	-
Separate Shower Fitted	Yes
Vanity Basin Fitted	Yes
Additional Systems	-

Kitchen Specification

Make & Model Of Cooker	Optimus
Separate Hob	Yes
Microwave Fitted	-
Make & Model Of Fridge	Shoreline
Gas, 12 volt or 240 volt	12 Volt
Additional Systems	Gas central heating

Fit Out Materials

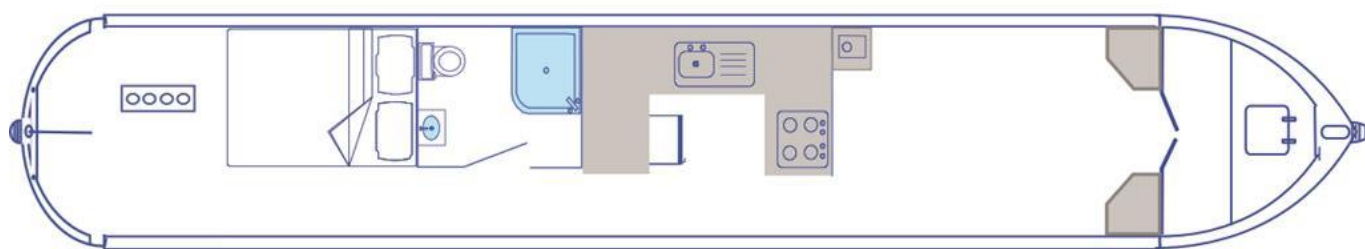
Insulation Used
Types Of Wood Used
Window Types
Materials Used
Bulls Eye, Pigeon Box or Houdini Hatch
Exterior Doors
Side Hatches
Front & Back Covers

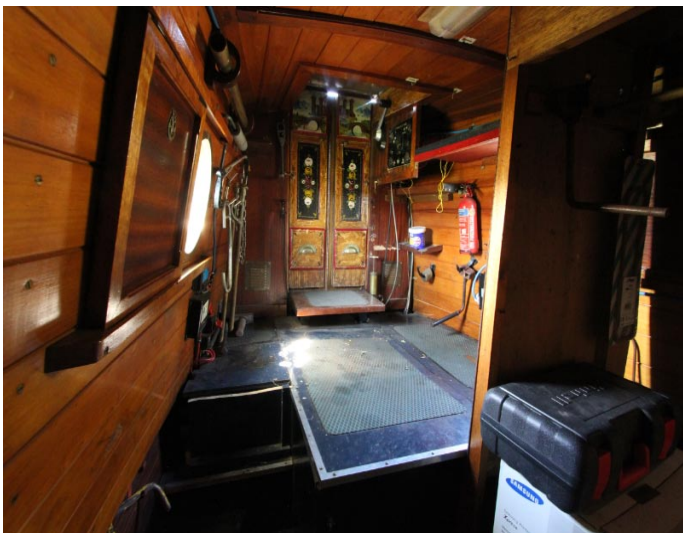
Polystyrene
Pine T&G and Sapele
Porthole
Brass
2 Houdini Hatch
-
-
Front cratch and cover

History Of Vessel

Boat Safety Certificate
Last Hull Blacking
Anodes
Further Maintenance
Recent Survey
Additional Information

Expires 2022
2018
2018 checked
Twin Tub Washing Machine & Two Solar Panels
Dec 2017
-





Whilton Locks, Near Daventry,
Northants, NN11 2NH
01327 842577
sales@whiltonmarina.co.uk
www.whiltonmarina.co.uk

**For further information please see
a member of the sales team.**

It is the responsibility of the buyer to ensure that all particulars given in the course of the purchase of the boat are accurate. Such particulars are intended only as a guide and do not constitute a term of any contract.

