



35ft, Peter Nicholls, 1997, Cruiser Style



BERTHS:

2



TOILET:

Thetford cassette



HEATING:

-



SURVEY:

2017



B.S.C:

Expires April 2021



BLACKING:

2018



ENGINE:

Beta 25



LAYOUT:

Standard

**Whilton
marina**

Whilton Locks, Near Daventry,
Northants, NN11 2NH

01327 842577

sales@whiltonmarina.co.uk

www.whiltonmarina.co.uk

**For further information please see
a member of the sales team.**

It is the responsibility of the buyer to ensure that all particulars given in the course of the purchase of the boat are accurate. Such particulars are intended only as a guide and do not constitute a term of any contract.



Boat Specification

Plating Specification	4/4/4
Flat, V-Hull or Keeled	Flat Hull
Fitted out By	Peter Nicholls
Fixed Berths	2 x Fixed singles
Additional Berths	-

Engine Specification

Engine Make	Beta 25
No. Of Cylinders	3
Keel, Water or Air Cooled	Keel Cooled
Gearbox Make	Prm 120
Aqua Drive	No
Bow Thruster	No
Diesel Tank Capacity	30gallons

Hot Water & Heating Systems

Source of Hot Water	Engine
Central Heating	-
Solid Fuel Stove	Arada
Water Tank Capacity	80 litres
Material used	Polypropylene
Additional Systems	-

Electrical System & Components

12 Volt Lighting	Yes
240 Volt Landline	Yes
Inverter	Sterling 1800watt
Generator	-
Batteries	3 domestic 1 starter
Additional Systems	2 x Solar panels & charge controller

Bathroom Specification

Type Of Toilet	Thetford cassette
Bath Fitted	No
Separate Shower Fitted	Yes
Vanity Basin Fitted	Yes
Additional Systems	-

Kitchen Specification

Make & Model Of Cooker	Thetford
Separate Hob	-
Microwave Fitted	-
Make & Model Of Fridge	Lec
Gas, 12 volt or 240 volt	12 volt
Additional Systems	-

Fit Out Materials

Insulation Used

Types Of Wood Used

Window Types

Materials Used

Bulls Eye, Pigeon Box or Houdini Hatch

Exterior Doors

Side Hatches

Front & Back Covers

Polystyrene

Pine T&G

Hopper

Stainless Steel

-

Front - Wood, Back - Steel

No

Door cover

History Of Vessel

Boat Safety Certificate

Last Hull Blacking

Anodes

Further Maintenance

Recent Survey

Additional Information

Expires April 2021

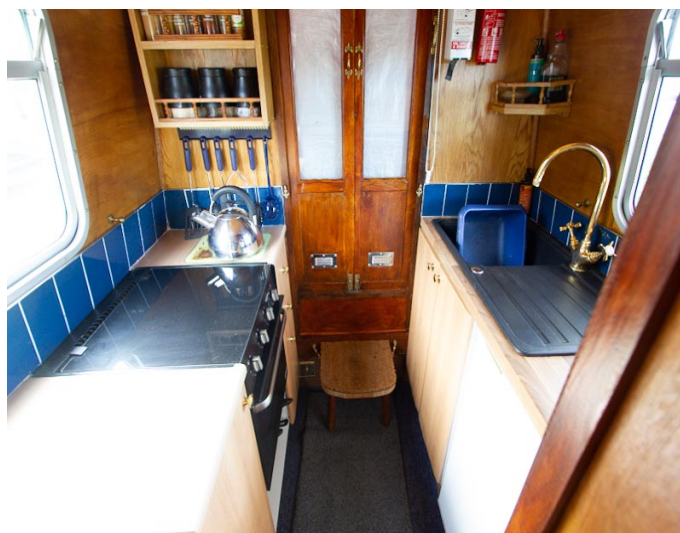
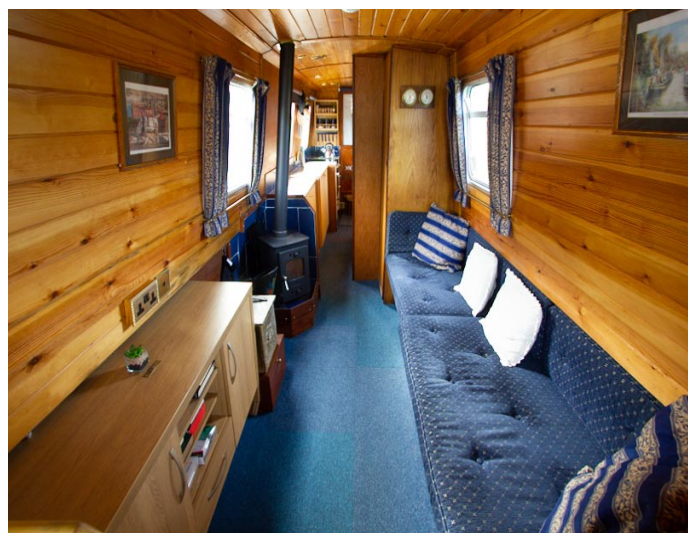
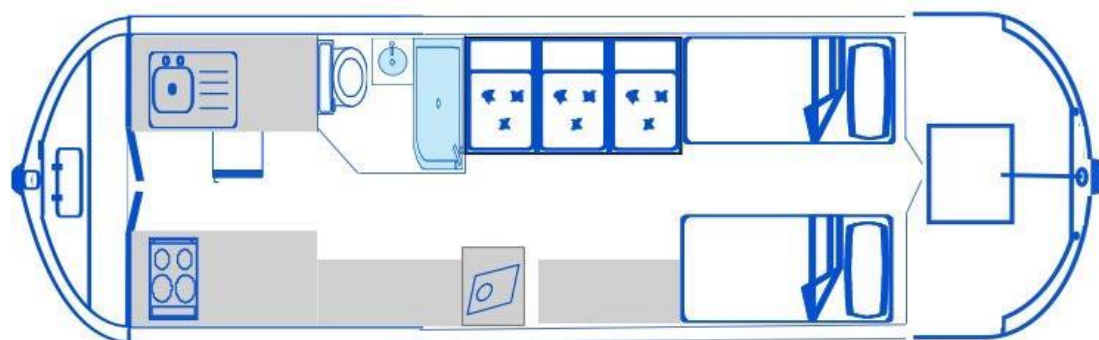
2018

6 in 2018

Serviced 2018

2017

-





Whilton Locks, Near Daventry,
Northants, NN11 2NH
01327 842577
sales@whiltonmarina.co.uk
www.whiltonmarina.co.uk

**For further information please see
a member of the sales team.**

It is the responsibility of the buyer to ensure that all particulars given in the course of the purchase of the boat are accurate. Such particulars are intended only as a guide and do not constitute a term of any contract.

