



57ft, Nessie Narrowboats, 2006, Traditional Style



BERTHS:

4



TOILET:

Thetford cassette



HEATING:

Alde



SURVEY:

-



B.S.C:

June 2021



BLACKING:

2019



ENGINE:

Beta 38



LAYOUT:

Standard

**Whilton
marina**

Whilton Locks, Near Daventry,
Northants, NN11 2NH

01327 842577

sales@whiltonmarina.co.uk

www.whiltonmarina.co.uk

**For further information please see
a member of the sales team.**

It is the responsibility of the buyer to ensure that all particulars given in the course of the purchase of the boat are accurate. Such particulars are intended only as a guide and do not constitute a term of any contract.



Boat Specification

Plating Specification	10/6/4
Flat, V-Hull or Keeled	Flat Hull
Fitted out By	B&S boatbuilders
Fixed Berths	Fixed double
Additional Berths	-

Engine Specification

Engine Make	Beta 38
No. Of Cylinders	4
Keel, Water or Air Cooled	Keel Cooled
Gearbox Make	Prm 120
Aqua Drive	No
Bow Thruster	No
Diesel Tank Capacity	35 gallons

Hot Water & Heating Systems

Source of Hot Water	Alde & engine, immersion
Central Heating	Alde
Solid Fuel Stove	Aarrow fires
Water Tank Capacity	120 gallons
Material used	Stainless steel
Additional Systems	-

Electrical System & Components

12 Volt Lighting	Yes
240 Volt Landline	Yes
Inverter	2000 watt
Generator	-
Batteries	-
Additional Systems	-

Bathroom Specification

Type Of Toilet	Thetford cassette
Bath Fitted	No
Separate Shower Fitted	Yes
Vanity Basin Fitted	Yes
Additional Systems	-

Kitchen Specification

Make & Model Of Cooker	Country leisure midi prima
Separate Hob	Spinflo
Microwave Fitted	-
Make & Model Of Fridge	Shoreline
Gas, 12 volt or 240 volt	12 volt
Additional Systems	Beko washing machine

Fit Out Materials

Insulation Used

Types Of Wood Used

Window Types

Materials Used

Bulls Eye, Pigeon Box or Houdini Hatch

Exterior Doors

Side Hatches

Front & Back Covers

Spray Foam

Oak

Hopper

Aluminium

-

Front - Steel, Back - Steel

Yes

Front cratch & cover

History Of Vessel

Boat Safety Certificate

Last Hull Blacking

Anodes

Further Maintenance

Recent Survey

Additional Information

June 2021

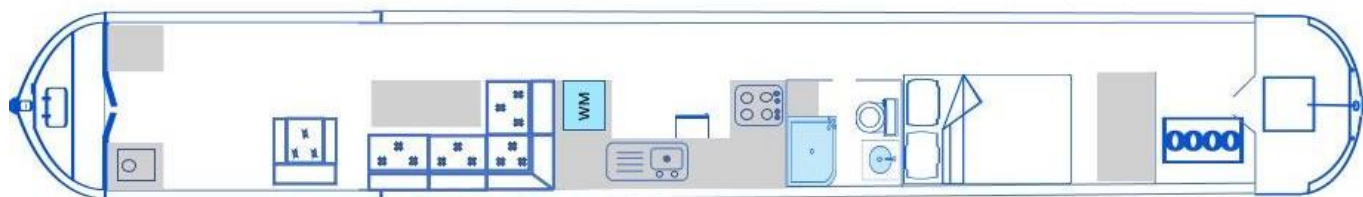
2019

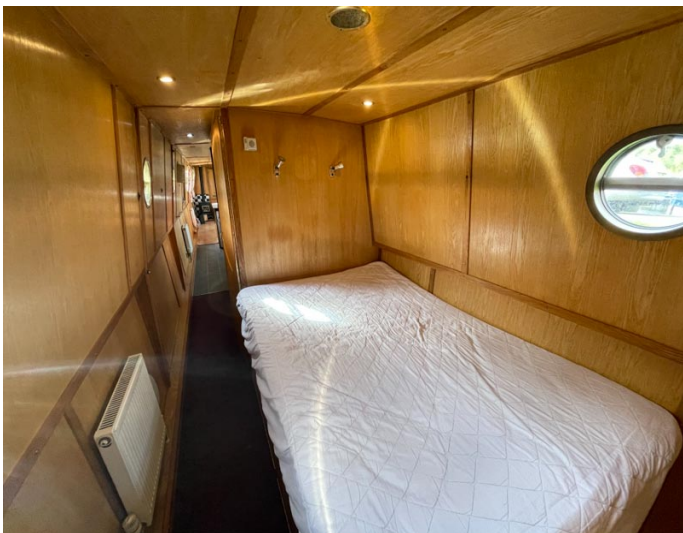
-

-

-

-





Whilton Locks, Near Daventry,
Northants, NN11 2NH
01327 842577
sales@whiltonmarina.co.uk
www.whiltonmarina.co.uk

**For further information please see
a member of the sales team.**

It is the responsibility of the buyer to ensure that all particulars given in the course of the purchase of the boat are accurate. Such particulars are intended only as a guide and do not constitute a term of any contract.

