



New - Gas Locker, front deck, doors, stern gear,...

71ft, Martin Fuller, 1986, Traditional Style



**BERTHS:**

2



**TOILET:**

-



**HEATING:**

-



**SURVEY:**

April 2021 (all work completed)



**B.S.C:**

-



**BLACKING:**

August 2021



**ENGINE:**

Lister HAW2



**LAYOUT:**

Standard

**Whilton  
marina**

Whilton Locks, Near Daventry,  
Northants, NN11 2NH

01327 842577

[sales@whiltonmarina.co.uk](mailto:sales@whiltonmarina.co.uk)

[www.whiltonmarina.co.uk](http://www.whiltonmarina.co.uk)

**For further information please see  
a member of the sales team.**

It is the responsibility of the buyer to ensure that all particulars given in the course of the purchase of the boat are accurate. Such particulars are intended only as a guide and do not constitute a term of any contract.



## Boat Specification

Plating Specification	10/6/4mm
Flat, V-Hull or Keeled	Flat Hull
Fitted out By	-
Fixed Berths	-
Additional Berths	-

## Engine Specification

Engine Make	Lister HAW2
No. Of Cylinders	2
Keel, Water or Air Cooled	Keel Cooled
Gearbox Make	PRM 260
Aqua Drive	No
Bow Thruster	No
Diesel Tank Capacity	-

## Hot Water & Heating Systems

Source of Hot Water	-
Central Heating	-
Solid Fuel Stove	-
Water Tank Capacity	-
Material used	Integral
Additional Systems	-

## Electrical System & Components

12 Volt Lighting	Yes
240 Volt Landline	Yes
Inverter	-
Generator	-
Batteries	One domestic & One starter
Additional Systems	-

## Bathroom Specification

Type Of Toilet	-
Bath Fitted	-
Separate Shower Fitted	-
Vanity Basin Fitted	-
Additional Systems	-

## Kitchen Specification

Make & Model Of Cooker	-
Separate Hob	-
Microwave Fitted	-
Make & Model Of Fridge	-
Gas, 12 volt or 240 volt	-
Additional Systems	-

## Fit Out Materials

Insulation Used  
Types Of Wood Used  
Window Types  
Materials Used  
Bulls Eye, Pigeon Box or Houdini Hatch  
Exterior Doors  
Side Hatches  
Front & Back Covers

Polystyrene  
Pine T&G  
Hopper  
Gold anodised  
Bulls eye, Pigeon Box  
-  
Yes  
-

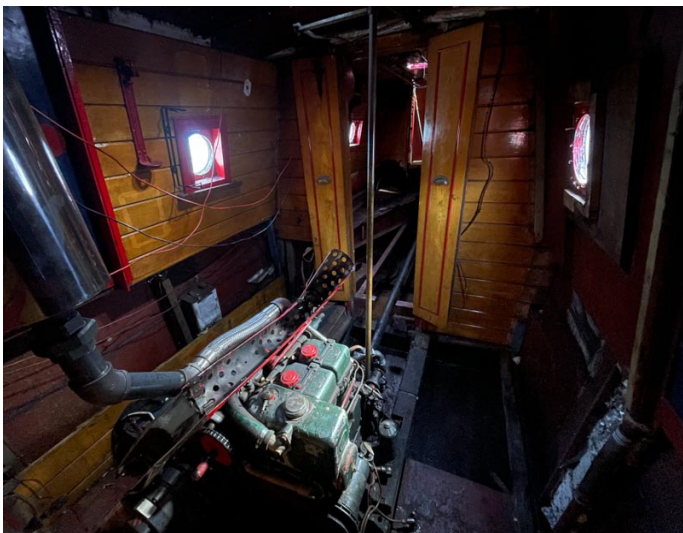
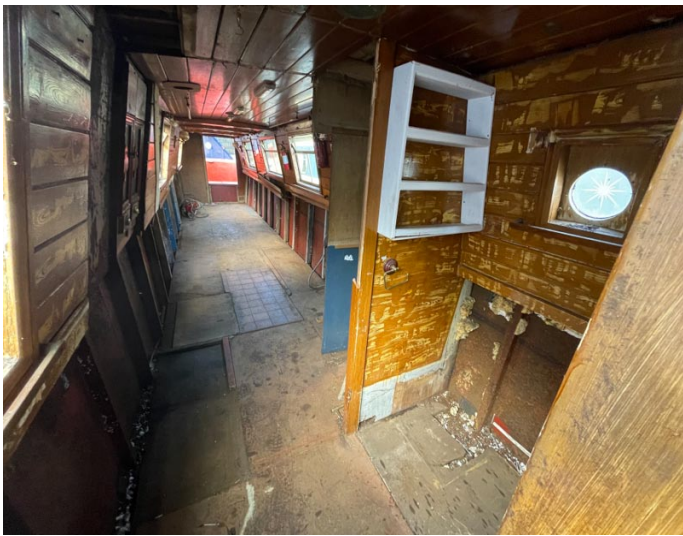
## History Of Vessel

Boat Safety Certificate  
Last Hull Blacking  
Anodes  
Further Maintenance  
Recent Survey  
Additional Information

-  
August 2021  
August 2021  
-  
April 2021 (all work completed)  
New - Gas Locker, front deck, doors, stern gear,







Whilton Locks, Near Daventry,  
Northants, NN11 2NH  
01327 842577  
[sales@whiltonmarina.co.uk](mailto:sales@whiltonmarina.co.uk)  
[www.whiltonmarina.co.uk](http://www.whiltonmarina.co.uk)

**For further information please see  
a member of the sales team.**

It is the responsibility of the buyer to ensure that all particulars given in the course of the purchase of the boat are accurate. Such particulars are intended only as a guide and do not constitute a term of any contract.