



56ft, Alexander Narrowboats, 1998, Cruiser Style



BERTHS:

6



TOILET:

Pumpout



HEATING:

Mikuni



SURVEY:

-



B.S.C:

Expires November
2022



BLACKING:

2018 2 pac epoxy



ENGINE:

Beta 37.5



LAYOUT:

Standard

Whilton
marina

Whilton Locks, Near Daventry,
Northants, NN11 2NH

01327 842577

sales@whiltonmarina.co.uk

www.whiltonmarina.co.uk

**For further information please see
a member of the sales team.**

It is the responsibility of the buyer to ensure that all particulars given in the course of the purchase of the boat are accurate. Such particulars are intended only as a guide and do not constitute a term of any contract.



Boat Specification

| | |
|------------------------|------------------------|
| Plating Specification | 10/6/3 |
| Flat, V-Hull or Keeled | Flat Hull |
| Fitted out By | Droiwitch canal centre |
| Fixed Berths | Fixed double |
| Additional Berths | Dinette & sofa bed |

Engine Specification

| | |
|---------------------------|-------------|
| Engine Make | Beta 37.5 |
| No. Of Cylinders | 4 |
| Keel, Water or Air Cooled | Keel Cooled |
| Gearbox Make | Prm 150 |
| Aqua Drive | No |
| Bow Thruster | Yes |
| Diesel Tank Capacity | 45 gallons |

Hot Water & Heating Systems

| | |
|---------------------|----------------|
| Source of Hot Water | Mikuni |
| Central Heating | Mikuni |
| Solid Fuel Stove | Morso squirell |
| Water Tank Capacity | 150 gallons |
| Material used | Integral |
| Additional Systems | - |

Electrical System & Components

| | |
|--------------------|----------------------|
| 12 Volt Lighting | Yes |
| 240 Volt Landline | Yes |
| Inverter | 1000watt |
| Generator | - |
| Batteries | 3 domestic 1 starter |
| Additional Systems | - |

Bathroom Specification

| | |
|------------------------|---------|
| Type Of Toilet | Pumpout |
| Bath Fitted | No |
| Separate Shower Fitted | Yes |
| Vanity Basin Fitted | Yes |
| Additional Systems | - |

Kitchen Specification

| | |
|--------------------------|-----------|
| Make & Model Of Cooker | 500 DIT |
| Separate Hob | - |
| Microwave Fitted | - |
| Make & Model Of Fridge | Shoreline |
| Gas, 12 volt or 240 volt | 12 volt |
| Additional Systems | - |

Fit Out Materials

Insulation Used

Types Of Wood Used

Window Types

Materials Used

Bulls Eye, Pigeon Box or Houdini Hatch

Exterior Doors

Side Hatches

Front & Back Covers

Polystyrene

Oak

Hopper

Gold Anodised

Houdini Hatch

Front - Wood, Back - Steel

No

Front cratch & cover

History Of Vessel

Boat Safety Certificate

Last Hull Blacking

Anodes

Further Maintenance

Recent Survey

Additional Information

Expires November 2022

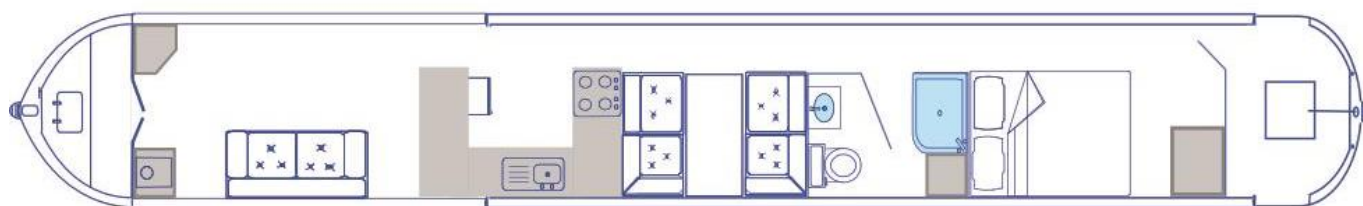
2018 2 pac epoxy

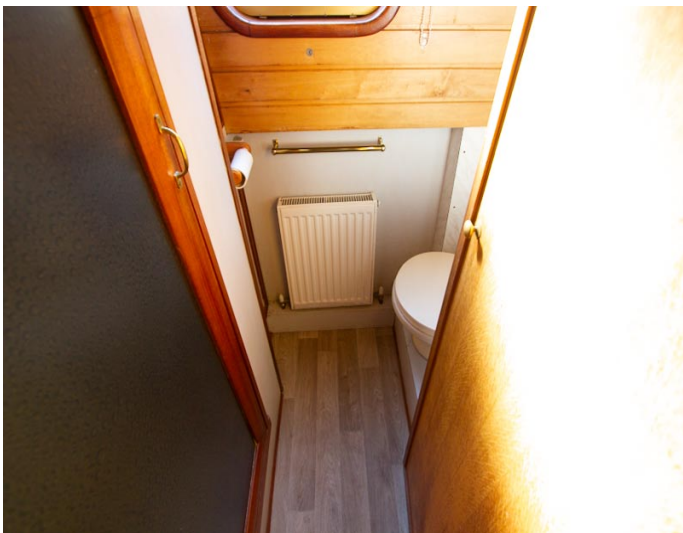
checked 2018

Solar panels x2

-

-





Whilton Locks, Near Daventry,
Northants, NN11 2NH
01327 842577
sales@whiltonmarina.co.uk
www.whiltonmarina.co.uk

**For further information please see
a member of the sales team.**

It is the responsibility of the buyer to ensure that all particulars given in the course of the purchase of the boat are accurate. Such particulars are intended only as a guide and do not constitute a term of any contract.

