



57ft, JSR Boats, 2014, Cruiser Style



BERTHS:

6



TOILET:

Tecma Pumpout



HEATING:

Eberspacher



SURVEY:

-



B.S.C:

New with sale



BLACKING:

2024



ENGINE:

Beta 43



LAYOUT:

Reverse

**Whilton
marina**

Whilton Locks, Near Daventry,
Northants, NN11 2NH

01327 842577

sales@whiltonmarina.co.uk

www.whiltonmarina.co.uk

**For further information please see
a member of the sales team.**

It is the responsibility of the buyer to ensure that all particulars given in the course of the purchase of the boat are accurate. Such particulars are intended only as a guide and do not constitute a term of any contract.



Boat Specification

| | |
|------------------------|-----------------|
| Plating Specification | 10/6/4 |
| Flat, V-Hull or Keeled | Flat Hull |
| Fitted out By | Walker Services |
| Fixed Berths | Fixed double x2 |
| Additional Berths | L shape dinette |

Engine Specification

| | |
|---------------------------|-------------|
| Engine Make | Beta 43 |
| No. Of Cylinders | 4 |
| Keel, Water or Air Cooled | Keel Cooled |
| Gearbox Make | Prm 150 |
| Aqua Drive | No |
| Bow Thruster | No |
| Diesel Tank Capacity | 35 gallons |

Hot Water & Heating Systems

| | |
|---------------------|--------------------|
| Source of Hot Water | Engine Eberspacher |
| Central Heating | Eberspacher |
| Solid Fuel Stove | Morso squirell |
| Water Tank Capacity | 120 gallons |
| Material used | Stainless steel |
| Additional Systems | - |

Electrical System & Components

| | |
|--------------------|----------------------|
| 12 Volt Lighting | Yes |
| 240 Volt Landline | Yes |
| Inverter | Victron 3000watt |
| Generator | - |
| Batteries | 4 domestic 1 starter |
| Additional Systems | - |

Bathroom Specification

| | |
|------------------------|---------------|
| Type Of Toilet | Tecma Pumpout |
| Bath Fitted | No |
| Separate Shower Fitted | Yes |
| Vanity Basin Fitted | Yes |
| Additional Systems | - |

Kitchen Specification

| | |
|--------------------------|-----------------------|
| Make & Model Of Cooker | Thetford midi prima |
| Separate Hob | Smev |
| Microwave Fitted | - |
| Make & Model Of Fridge | Shoreline |
| Gas, 12 volt or 240 volt | 12 volt |
| Additional Systems | Candy washing machine |

Fit Out Materials

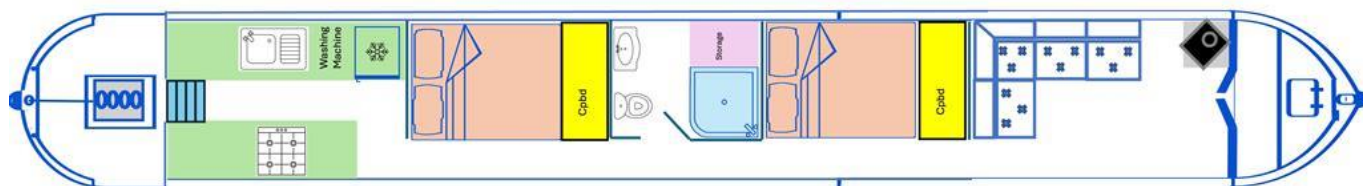
Insulation Used
Types Of Wood Used
Window Types
Materials Used
Bulls Eye, Pigeon Box or Houdini Hatch
Exterior Doors
Side Hatches
Front & Back Covers

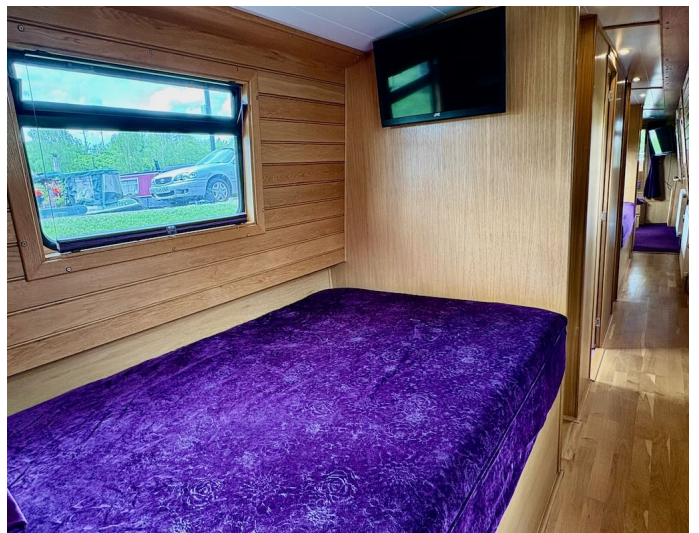
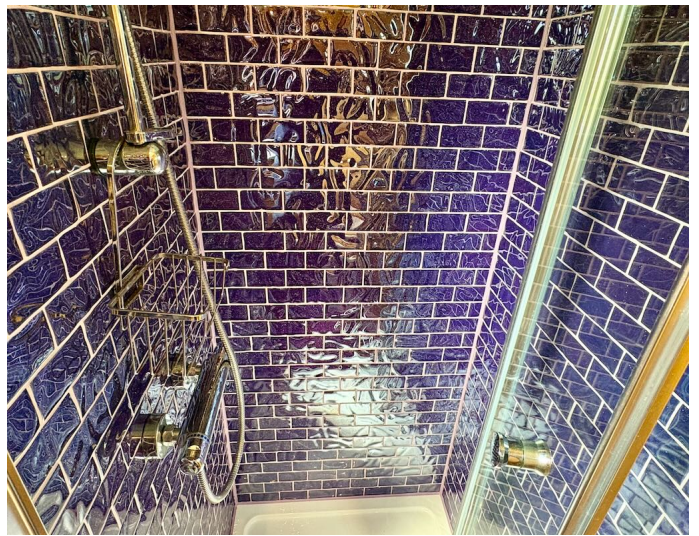
Spray Foam
Oak
Hopper
Powder Coated
-
Front - Wood, Back - Steel
No
Front cratch & cover

History Of Vessel

Boat Safety Certificate
Last Hull Blacking
Anodes
Further Maintenance
Recent Survey
Additional Information
RCD/RCD Compliant?
Further Information

New with sale
2024
Checked 2024
-
-
-
Yes
-





Whilton Locks, Near Daventry,
Northants, NN11 2NH
01327 842577
sales@whiltonmarina.co.uk
www.whiltonmarina.co.uk

**For further information please see
a member of the sales team.**

It is the responsibility of the buyer to ensure that all particulars given in the course of the purchase of the boat are accurate. Such particulars are intended only as a guide and do not constitute a term of any contract.

