



## 50ft, Liverpool, 2010, Traditional Style



**BERTHS:**

4



**TOILET:**

Jabsco Pumpout



**HEATING:**

Mikuni



**SURVEY:**

-



**B.S.C:**

February 2024



**BLACKING:**

August 2018



**ENGINE:**

Isuzu 35



**LAYOUT:**

Reverse

**Whilton**  
marina

Whilton Locks, Near Daventry,  
Northants, NN11 2NH

01327 842577

[sales@whiltonmarina.co.uk](mailto:sales@whiltonmarina.co.uk)

[www.whiltonmarina.co.uk](http://www.whiltonmarina.co.uk)

**For further information please see  
a member of the sales team.**

It is the responsibility of the buyer to ensure that all particulars given in the course of the purchase of the boat are accurate. Such particulars are intended only as a guide and do not constitute a term of any contract.



## Boat Specification

Plating Specification  
Flat, V-Hull or Keeled  
Fitted out By  
Fixed Berths  
Additional Berths

10/6/4  
Flat Hull  
Owner  
Fixed double  
Pull out

## Engine Specification

Engine Make  
No. Of Cylinders  
Keel, Water or Air Cooled  
Gearbox Make  
Aqua Drive  
Bow Thruster  
Diesel Tank Capacity

Isuzu 35  
4  
Keel Cooled  
Prm 120  
No  
No  
35 gallon

## Hot Water & Heating Systems

Source of Hot Water  
Central Heating  
Solid Fuel Stove  
Water Tank Capacity  
Material used  
Additional Systems

Engine & Mikuni  
Mikuni  
Black Sol Longridge  
150 gallons  
Integral  
-

## Electrical System & Components

12 Volt Lighting  
240 Volt Landline  
Inverter  
Generator  
Batteries  
Additional Systems

Yes  
Yes  
-  
-  
3 domestic 1 starter  
-

## Bathroom Specification

Type Of Toilet  
Bath Fitted  
Separate Shower Fitted  
Vanity Basin Fitted  
Additional Systems

Jabsco Pumpout  
Yes  
No  
Yes  
-

## Kitchen Specification

Make & Model Of Cooker  
Separate Hob  
Microwave Fitted  
Make & Model Of Fridge  
Gas, 12 volt or 240 volt  
Additional Systems

Thetford Caprice MKII  
-  
-  
Pro line  
12 volt  
Zanussi washing machine

## Fit Out Materials

Insulation Used

Types Of Wood Used

Window Types

Materials Used

Bulls Eye, Pigeon Box or Houdini Hatch

Exterior Doors

Side Hatches

Front & Back Covers

Spray Foam

Oak

Porthole

Gold Anodised

-

Front - Wood, Back - Steel

Yes

No

## History Of Vessel

Boat Safety Certificate

Last Hull Blacking

Anodes

Further Maintenance

Recent Survey

Additional Information

February 2024

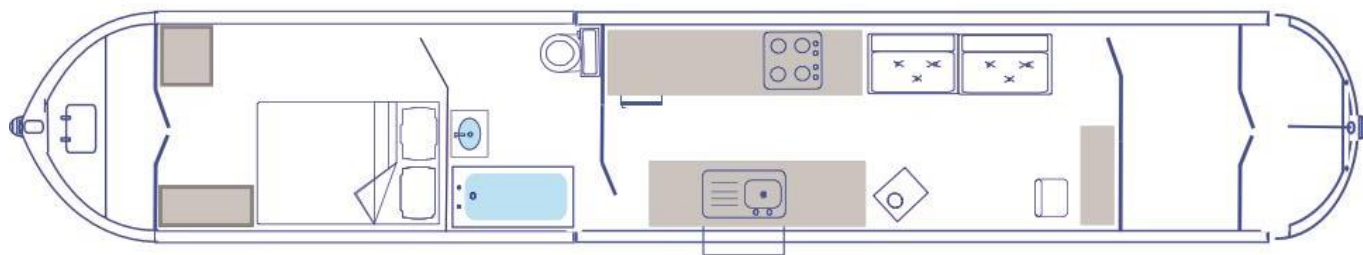
August 2018

-

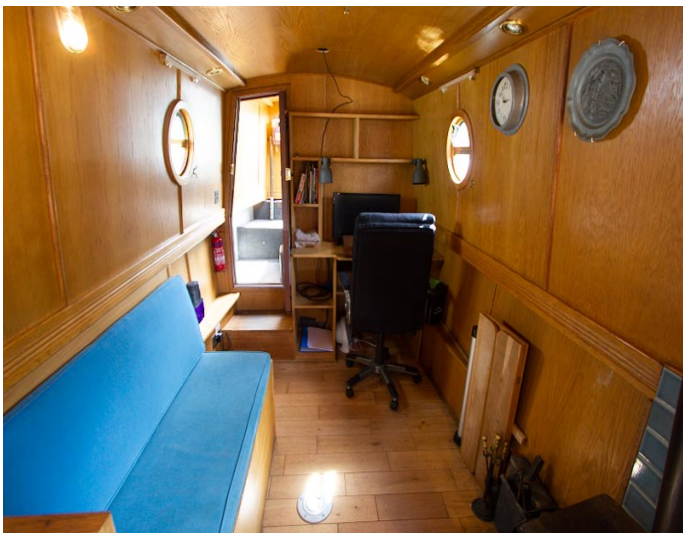
-

-

-







Whilton Locks, Near Daventry,  
Northants, NN11 2NH  
01327 842577  
sales@whiltonmarina.co.uk  
www.whiltonmarina.co.uk

**For further information please see  
a member of the sales team.**

It is the responsibility of the buyer to ensure that all particulars given in the course of the purchase of the boat are accurate. Such particulars are intended only as a guide and do not constitute a term of any contract.

