



50ft, GT Boats, 1995, Traditional Style



BERTHS:

4



TOILET:

Mansfield traveller
Pumpout



HEATING:

Alde



SURVEY:

-



B.S.C:

Expires July 2023



BLACKING:

October 2019



ENGINE:

Thornycroft
Mitsubishi 1.5



LAYOUT:

Standard

Whilton
marina

Whilton Locks, Near Daventry,
Northants, NN11 2NH

01327 842577

sales@whiltonmarina.co.uk

www.whiltonmarina.co.uk

**For further information please see
a member of the sales team.**

It is the responsibility of the buyer to ensure that all particulars given in the course of the purchase of the boat are accurate. Such particulars are intended only as a guide and do not constitute a term of any contract.



Boat Specification

Plating Specification
Flat, V-Hull or Keeled
Fitted out By
Fixed Berths
Additional Berths

10/6/4
Flat Hull
Professional
Fixed double
L shape

Engine Specification

Engine Make
No. Of Cylinders
Keel, Water or Air Cooled
Gearbox Make
Aqua Drive
Bow Thruster
Diesel Tank Capacity

Thornycroft Mitsubishi 1.5
4
Keel Cooled
Hbw 100
No
No
25 gallons

Hot Water & Heating Systems

Source of Hot Water
Central Heating
Solid Fuel Stove
Water Tank Capacity
Material used
Additional Systems

Alde engine
Alde
Valor
120 gallons
Integral
-

Electrical System & Components

12 Volt Lighting
240 Volt Landline
Inverter
Generator
Batteries
Additional Systems

Yes
Yes
-
-
2 domestic 1 starter
-

Bathroom Specification

Type Of Toilet
Bath Fitted
Separate Shower Fitted
Vanity Basin Fitted
Additional Systems

Mansfield traveller Pumpout
Yes
No
Yes
-

Kitchen Specification

Make & Model Of Cooker
Separate Hob
Microwave Fitted
Make & Model Of Fridge
Gas, 12 volt or 240 volt
Additional Systems

Vanette SL4
Vanette 4000/2
-
Lec
12 volt
-

Fit Out Materials

Insulation Used

Types Of Wood Used

Window Types

Materials Used

Bulls Eye, Pigeon Box or Houdini Hatch

Exterior Doors

Side Hatches

Front & Back Covers

Polystyrene

Oak

Hopper

Stainless Steel

-

Front - Wood, Back - Steel

Yes

Front cratch & cover

History Of Vessel

Boat Safety Certificate

Last Hull Blacking

Anodes

Further Maintenance

Recent Survey

Additional Information

Expires July 2023

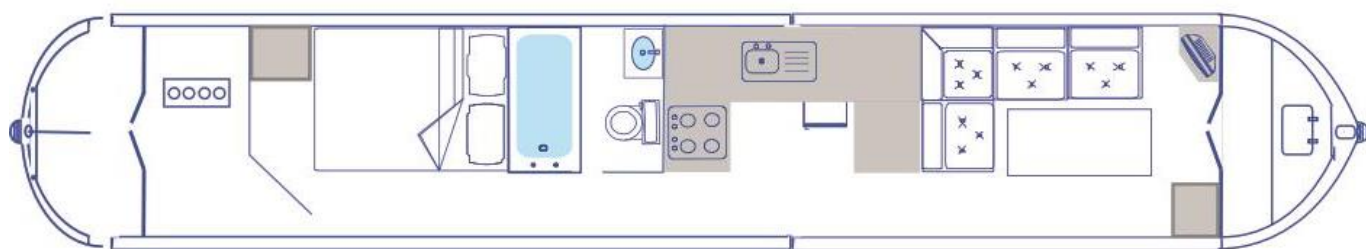
October 2019

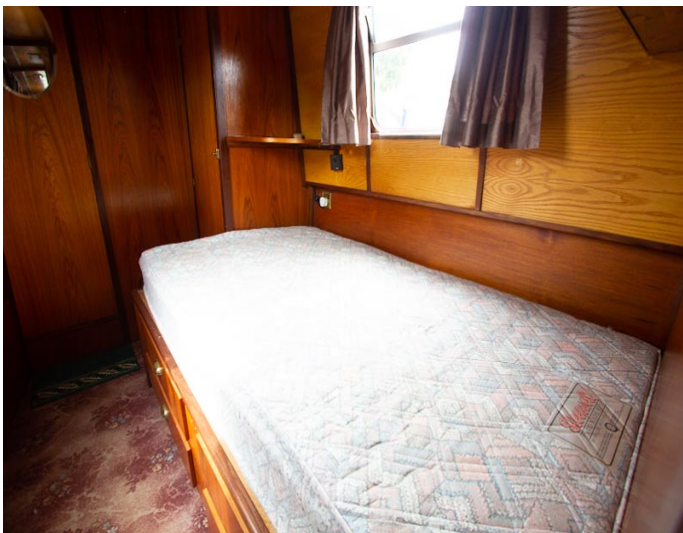
New 2019

-

-

-





Whilton Locks, Near Daventry,
Northants, NN11 2NH
01327 842577
sales@whiltonmarina.co.uk
www.whiltonmarina.co.uk

**For further information please see
a member of the sales team.**

It is the responsibility of the buyer to ensure that all particulars given in the course of the purchase of the boat are accurate. Such particulars are intended only as a guide and do not constitute a term of any contract.

