



## 57ft x 10ft, Partial Refit

57ft, Liverpool, 2004, Widebeam Style Boat



**BERTHS:**

2



**TOILET:**

Pumpout



**HEATING:**

Eberspacher



**SURVEY:**

-



**B.S.C:**

-



**BLACKING:**

2015



**ENGINE:**

Isuzu 70hp



**LAYOUT:**

Standard

**Whilton**  
marina

Whilton Locks, Near Daventry,  
Northants, NN11 2NH

01327 842577

[sales@whiltonmarina.co.uk](mailto:sales@whiltonmarina.co.uk)

[www.whiltonmarina.co.uk](http://www.whiltonmarina.co.uk)

**For further information please see  
a member of the sales team.**

It is the responsibility of the buyer to ensure that all particulars given in the course of the purchase of the boat are accurate. Such particulars are intended only as a guide and do not constitute a term of any contract.



## Boat Specification

Plating Specification	10/6/5/4
Flat, V-Hull or Keeled	Flat Hull
Fitted out By	Owner
Fixed Berths	Fixed double
Additional Berths	-

## Engine Specification

Engine Make	Isuzu 70hp
No. Of Cylinders	4
Keel, Water or Air Cooled	Keel Cooled
Gearbox Make	Prm 260
Aqua Drive	No
Bow Thruster	Yes
Diesel Tank Capacity	50 gallons

## Hot Water & Heating Systems

Source of Hot Water	Eberspacher
Central Heating	Eberspacher
Solid Fuel Stove	Portway
Water Tank Capacity	150 gallons
Material used	Integral
Additional Systems	-

## Electrical System & Components

12 Volt Lighting	Yes
240 Volt Landline	Yes
Inverter	Sterling 1800
Generator	-
Batteries	3 domestic 1 starter
Additional Systems	C Tek charger

## Bathroom Specification

Type Of Toilet	Pumpout
Bath Fitted	Yes
Separate Shower Fitted	Over the bath
Vanity Basin Fitted	Yes
Additional Systems	-

## Kitchen Specification

Make & Model Of Cooker	Newworld
Separate Hob	Newworld
Microwave Fitted	-
Make & Model Of Fridge	Currys
Gas, 12 volt or 240 volt	240 volt
Additional Systems	-

## Fit Out Materials

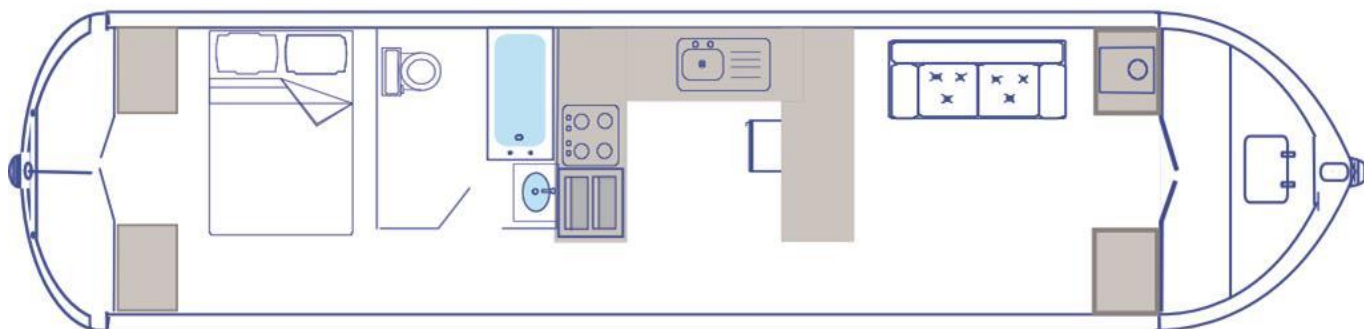
Insulation Used  
Types Of Wood Used  
Window Types  
Materials Used  
Bulls Eye, Pigeon Box or Houdini Hatch  
Exterior Doors  
Side Hatches  
Front & Back Covers

Spray Foam  
Oak T&G  
Porthole  
Gold Anodised  
-  
Front - Wood, Back - Steel  
Yes  
No

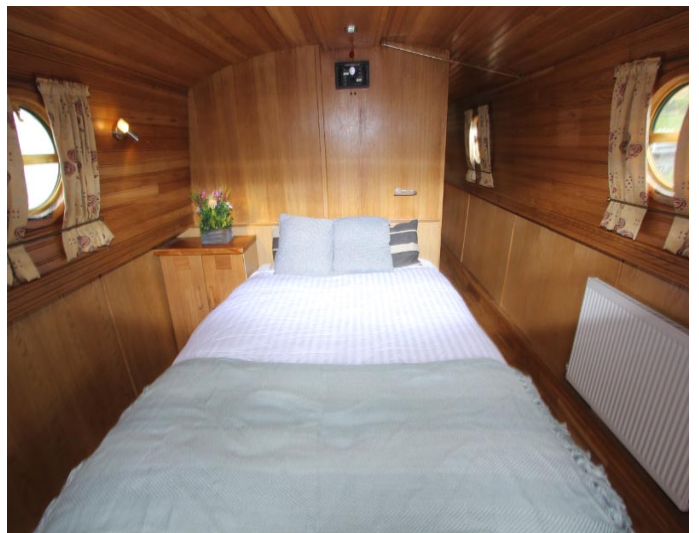
## History Of Vessel

Boat Safety Certificate  
Last Hull Blacking  
Anodes  
Further Maintenance  
Recent Survey  
Additional Information

-  
2015  
2015  
-  
-  
57ft x 10ft, Partial Refit







Whilton Locks, Near Daventry,  
Northants, NN11 2NH  
01327 842577  
sales@whiltonmarina.co.uk  
www.whiltonmarina.co.uk

**For further information please see  
a member of the sales team.**

It is the responsibility of the buyer to ensure that all particulars given in the course of the purchase of the boat are accurate. Such particulars are intended only as a guide and do not constitute a term of any contract.

