



Sides over plated 2023

57ft, Price Fallows, 2004, Traditional Style



BERTHS:

2



TOILET:

Tecma Pumpout



HEATING:

Alde



SURVEY:

June 2025



B.S.C:

New with sale



BLACKING:

2025



ENGINE:

Vetus 4.17



LAYOUT:

Standard

Whilton
marina

Whilton Locks, Near Daventry,
Northants, NN11 2NH

01327 842577

sales@whiltonmarina.co.uk

www.whiltonmarina.co.uk

**For further information please see
a member of the sales team.**

It is the responsibility of the buyer to ensure that all particulars given in the course of the purchase of the boat are accurate. Such particulars are intended only as a guide and do not constitute a term of any contract.



Boat Specification

Plating Specification	10/6/5/4
Flat, V-Hull or Keeled	Flat Hull
Fitted out By	Robert Edgley
Fixed Berths	Fixed double
Additional Berths	-

Engine Specification

Engine Make	Vetus 4.17
No. Of Cylinders	4
Keel, Water or Air Cooled	Keel Cooled
Gearbox Make	TMC
Aqua Drive	No
Bow Thruster	No
Diesel Tank Capacity	35 gallons

Hot Water & Heating Systems

Source of Hot Water	Alde, immersion & Engine
Central Heating	Alde
Solid Fuel Stove	Morso squirell
Water Tank Capacity	120 gallons
Material used	Stainless steel
Additional Systems	-

Electrical System & Components

12 Volt Lighting	Yes
240 Volt Landline	Yes
Inverter	Victron 1600watt
Generator	-
Batteries	3 domestic 1 starter
Additional Systems	-

Bathroom Specification

Type Of Toilet	Tecma Pumpout
Bath Fitted	No
Separate Shower Fitted	Yes
Vanity Basin Fitted	Yes
Additional Systems	-

Kitchen Specification

Make & Model Of Cooker	Belling
Separate Hob	-
Microwave Fitted	Panasonic
Make & Model Of Fridge	Inlander
Gas, 12 volt or 240 volt	12 volt
Additional Systems	-

Fit Out Materials

Insulation Used
Types Of Wood Used
Window Types
Materials Used
Bulls Eye, Pigeon Box or Houdini Hatch
Exterior Doors
Side Hatches
Front & Back Covers

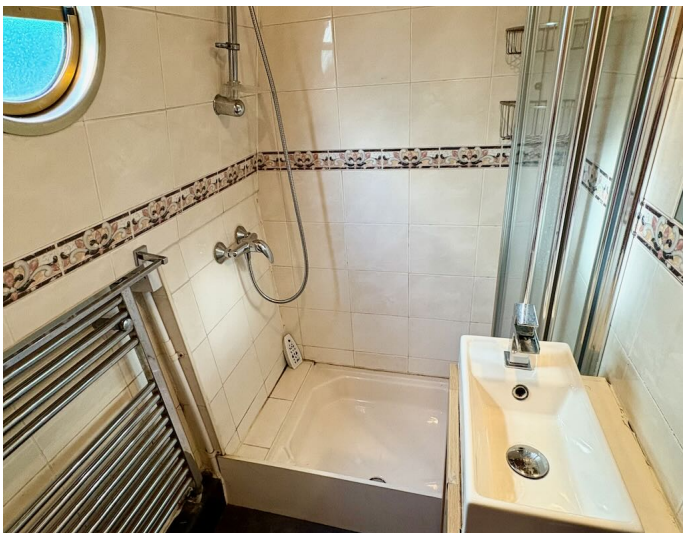
Rockwool
Oak T&G
Hopper
Gold Anodised
-
Front - Steel, Back - Steel
Yes
Front cratch & cover

History Of Vessel

Boat Safety Certificate
Last Hull Blacking
Anodes
Further Maintenance
Recent Survey
Additional Information
RCD/RCR Compliant?
Further Information

New with sale
2025
Checked 2025
-
June 2025
Sides over plated 2023
Yes
-





Whilton Locks, Near Daventry,
Northants, NN11 2NH
01327 842577
sales@whiltonmarina.co.uk
www.whiltonmarina.co.uk

**For further information please see
a member of the sales team.**

It is the responsibility of the buyer to ensure that all particulars given in the course of the purchase of the boat are accurate. Such particulars are intended only as a guide and do not constitute a term of any contract.

