



66ft, Evans & Son, 2002, Traditional Style



BERTHS:

4



TOILET:

Pumpout



HEATING:

Alde



SURVEY:

-



B.S.C:

Expires March
2026



BLACKING:

2021 October



ENGINE:

Beta 1505



LAYOUT:

Standard

**Whilton
marina**

Whilton Locks, Near Daventry,
Northants, NN11 2NH

01327 842577

sales@whiltonmarina.co.uk

www.whiltonmarina.co.uk

**For further information please see
a member of the sales team.**

It is the responsibility of the buyer to ensure that all particulars given in the course of the purchase of the boat are accurate. Such particulars are intended only as a guide and do not constitute a term of any contract.



Boat Specification

Plating Specification	10/6/5/4
Flat, V-Hull or Keeled	Flat Hull
Fitted out By	Owner
Fixed Berths	Fixed double
Additional Berths	Sofa bed

Engine Specification

Engine Make	Beta 1505
No. Of Cylinders	4
Keel, Water or Air Cooled	Keel Cooled
Gearbox Make	Prm 150
Aqua Drive	No
Bow Thruster	No
Diesel Tank Capacity	30 gallons

Hot Water & Heating Systems

Source of Hot Water	Engine & Alde
Central Heating	Alde
Solid Fuel Stove	Yes
Water Tank Capacity	150 gallons
Material used	Fibre glass
Additional Systems	-

Electrical System & Components

12 Volt Lighting	Yes
240 Volt Landline	Yes
Inverter	Mastervolt 2000watt
Generator	-
Batteries	3 domestic 1 starter
Additional Systems	-

Bathroom Specification

Type Of Toilet	Pumpout
Bath Fitted	Yes
Separate Shower Fitted	No
Vanity Basin Fitted	Yes
Additional Systems	-

Kitchen Specification

Make & Model Of Cooker	Vanette GG2200
Separate Hob	Vanette 4000/2
Microwave Fitted	-
Make & Model Of Fridge	Pro line
Gas, 12 volt or 240 volt	240 volt
Additional Systems	-

Fit Out Materials

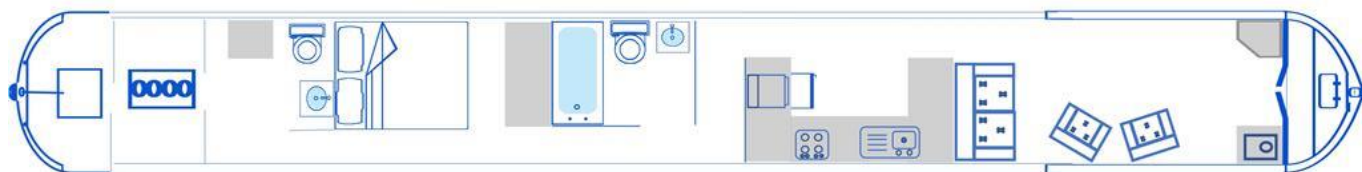
Insulation Used
Types Of Wood Used
Window Types
Materials Used
Bulls Eye, Pigeon Box or Houdini Hatch
Exterior Doors
Side Hatches
Front & Back Covers

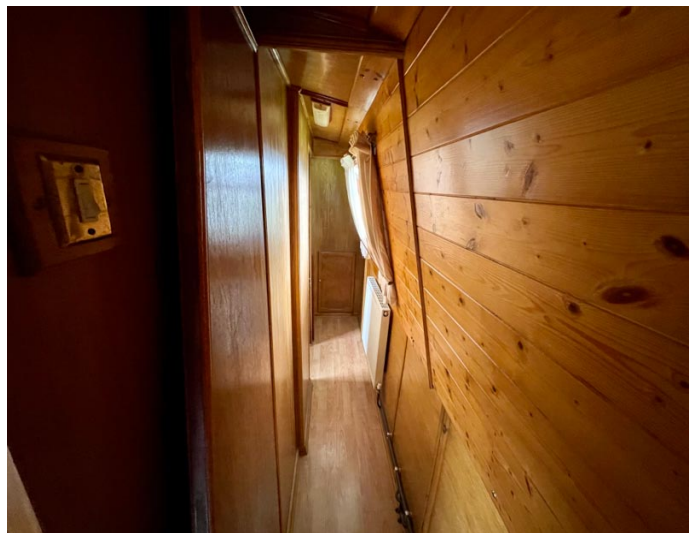
Polystyrene
Pine T&G
Hopper
Stainless Steel
-
Front - Steel, Back - Steel
Yes
Front cratch & cover

History Of Vessel

Boat Safety Certificate
Last Hull Blacking
Anodes
Further Maintenance
Recent Survey
Additional Information

Expires March 2026
2021 October
Checked October 2021
-
-
-





Whilton Locks, Near Daventry,
Northants, NN11 2NH
01327 842577
sales@whiltonmarina.co.uk
www.whiltonmarina.co.uk

**For further information please see
a member of the sales team.**

It is the responsibility of the buyer to ensure that all particulars given in the course of the purchase of the boat are accurate. Such particulars are intended only as a guide and do not constitute a term of any contract.

