



58ft, Heron, 2003, Traditional Style

**BERTHS:**

Two

**TOILET:**

Vac u Flush & Porta
Potti

**HEATING:**

Mikuni MX40

**SURVEY:**

July 2022

**B.S.C:**

New with sale

**BLACKING:**

July 2022

**ENGINE:**

Isuzu 38

**LAYOUT:**

Standard

Whilton
marina

Whilton Locks, Near Daventry,
Northants, NN11 2NH

01327 842577

sales@whiltonmarina.co.uk

www.whiltonmarina.co.uk

**For further information please see
a member of the sales team.**

It is the responsibility of the buyer to ensure that all particulars given in the course of the purchase of the boat are accurate. Such particulars are intended only as a guide and do not constitute a term of any contract.



Boat Specification

Plating Specification	10/6/4mm
Flat, V-Hull or Keeled	Flat Hull
Fitted out By	Project Boat
Fixed Berths	Fixed Double
Additional Berths	-

Engine Specification

Engine Make	Isuzu 38
No. Of Cylinders	Four
Keel, Water or Air Cooled	Keel Cooled
Gearbox Make	PRM 150
Aqua Drive	No
Bow Thruster	No
Diesel Tank Capacity	50 Gallons Aprox

Hot Water & Heating Systems

Source of Hot Water	Engine Immersion
Central Heating	Mikuni MX40
Solid Fuel Stove	-
Water Tank Capacity	-
Material used	Stainless Steel
Additional Systems	-

Electrical System & Components

12 Volt Lighting	Yes
240 Volt Landline	Yes
Inverter	Sterling 3000w
Generator	-
Batteries	6 x 2v Domestic, 1 x 12v Starter
Additional Systems	Sterling Battery Charger

Bathroom Specification

Type Of Toilet	Vac u Flush & Porta Potti
Bath Fitted	-
Separate Shower Fitted	Yes
Vanity Basin Fitted	Yes
Additional Systems	-

Kitchen Specification

Make & Model Of Cooker	Satesman Legacy
Separate Hob	-
Microwave Fitted	Yes
Make & Model Of Fridge	Currys
Gas, 12 volt or 240 volt	240
Additional Systems	240 Volt freezer

Fit Out Materials

Insulation Used
Types Of Wood Used
Window Types
Materials Used
Bulls Eye, Pigeon Box or Houdini Hatch
Exterior Doors
Side Hatches
Front & Back Covers

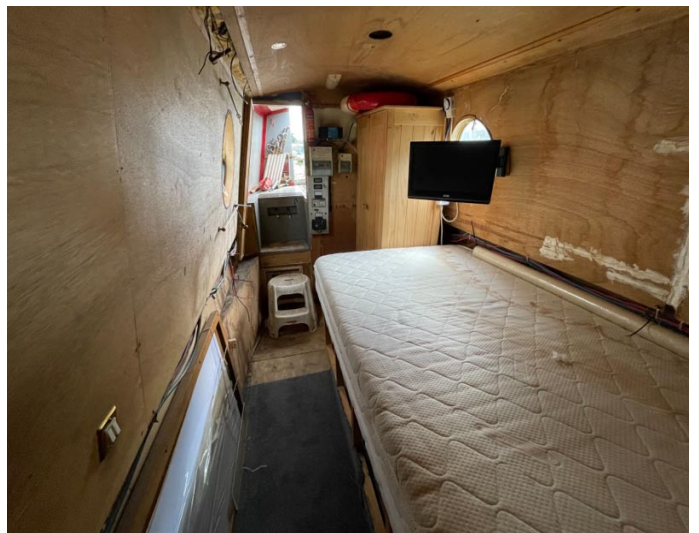
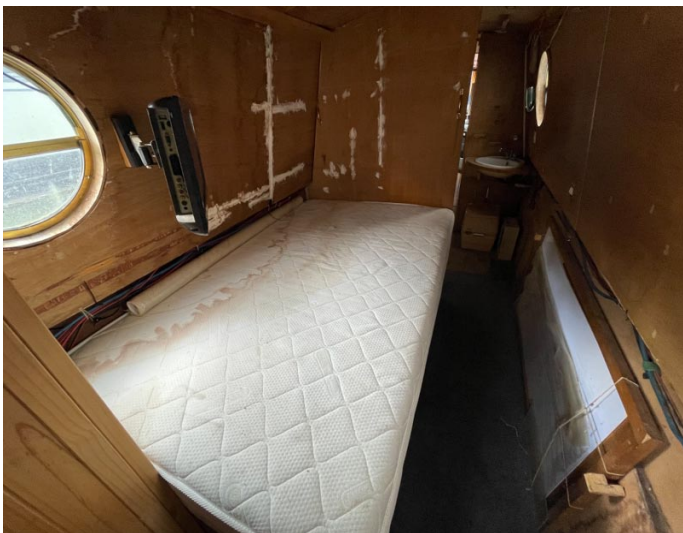
Spray Foam
Plywood Painted
Hopper & Portholes
Gold Anodised
Bullseye
Front - Steel, Back - Steel
Yes
-

History Of Vessel

Boat Safety Certificate
Last Hull Blacking
Anodes
Further Maintenance
Recent Survey
Additional Information

New with sale
July 2022
Checked 2022
-
July 2022
-





Whilton Locks, Near Daventry,
Northants, NN11 2NH
01327 842577
sales@whiltonmarina.co.uk
www.whiltonmarina.co.uk

**For further information please see
a member of the sales team.**

It is the responsibility of the buyer to ensure that all particulars given in the course of the purchase of the boat are accurate. Such particulars are intended only as a guide and do not constitute a term of any contract.

