



70ft, Evans & Son, 1997, Traditional Style



BERTHS:

4



TOILET:

Thetford cassette



HEATING:

Kabola



SURVEY:

-



B.S.C:

New with Sale



BLACKING:

2022



ENGINE:

Lister HRW3



LAYOUT:

Standard

**Whilton
marina**

Whilton Locks, Near Daventry,
Northants, NN11 2NH

01327 842577

sales@whiltonmarina.co.uk

www.whiltonmarina.co.uk

**For further information please see
a member of the sales team.**

It is the responsibility of the buyer to ensure that all particulars given in the course of the purchase of the boat are accurate. Such particulars are intended only as a guide and do not constitute a term of any contract.



Boat Specification

Plating Specification	10/6/4
Flat, V-Hull or Keeled	Flat Hull
Fitted out By	Owner / Stephen Goldsbrough
Fixed Berths	Fixed double
Additional Berths	Boatmans cabin

Engine Specification

Engine Make	Lister HRW3
No. Of Cylinders	3
Keel, Water or Air Cooled	Keel Cooled
Gearbox Make	Lister
Aqua Drive	No
Bow Thruster	No
Diesel Tank Capacity	25 gallons approx

Hot Water & Heating Systems

Source of Hot Water	Engine immersion
Central Heating	Kabola
Solid Fuel Stove	Yes x 2
Water Tank Capacity	150 gallons approx
Material used	Integral
Additional Systems	-

Electrical System & Components

12 Volt Lighting	Yes
240 Volt Landline	Yes
Inverter	Victron 2000watt
Generator	-
Batteries	3 domestic, 1 starter
Additional Systems	-

Bathroom Specification

Type Of Toilet	Thetford cassette
Bath Fitted	No
Separate Shower Fitted	Yes
Vanity Basin Fitted	Yes
Additional Systems	-

Kitchen Specification

Make & Model Of Cooker	Country leisure midi prima
Separate Hob	Country leisure 9 series
Microwave Fitted	-
Make & Model Of Fridge	Lec
Gas, 12 volt or 240 volt	12 volt
Additional Systems	-

Fit Out Materials

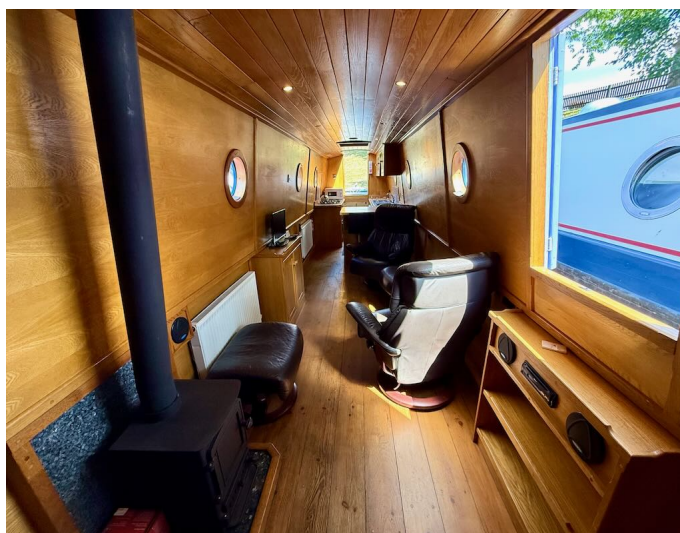
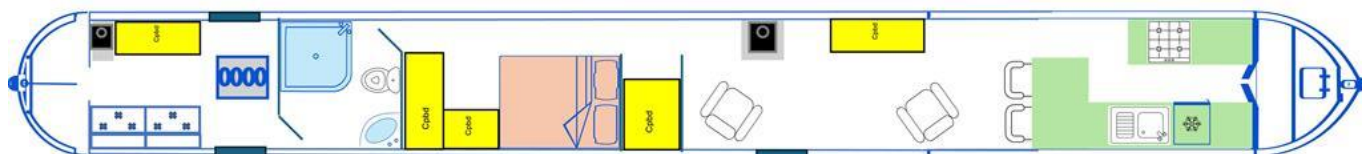
Insulation Used
Types Of Wood Used
Window Types
Materials Used
Bulls Eye, Pigeon Box or Houdini Hatch
Exterior Doors
Side Hatches
Front & Back Covers

Celotex
Oak
Porthole
Brass
Bullseye, Houdini hatch x 2
Front - Steel, Back - Steel
Yes
-

History Of Vessel

Boat Safety Certificate
Last Hull Blacking
Anodes
Further Maintenance
Recent Survey
Additional Information
RCD/RCR Compliant?
Further Information

New with Sale
2022
Checked 2022
-
-
-
Not Applicable
-





Whilton Locks, Near Daventry,
Northants, NN11 2NH
01327 842577
sales@whiltonmarina.co.uk
www.whiltonmarina.co.uk

**For further information please see
a member of the sales team.**

It is the responsibility of the buyer to ensure that all particulars given in the course of the purchase of the boat are accurate. Such particulars are intended only as a guide and do not constitute a term of any contract.

