



55ft, Hixon, 2004, Traditional Style



BERTHS:

3



TOILET:

Thetford cassette



HEATING:

Eberspacher



SURVEY:

-



B.S.C:

New with sale



BLACKING:

2017



ENGINE:

Isuzu 35



LAYOUT:

Reverse

**Whilton
marina**

Whilton Locks, Near Daventry,
Northants, NN11 2NH

01327 842577

sales@whiltonmarina.co.uk

www.whiltonmarina.co.uk

**For further information please see
a member of the sales team.**

It is the responsibility of the buyer to ensure that all particulars given in the course of the purchase of the boat are accurate. Such particulars are intended only as a guide and do not constitute a term of any contract.



Boat Specification

Plating Specification	10/6/5/4
Flat, V-Hull or Keeled	Flat Hull
Fitted out By	Ken Morton
Fixed Berths	Fixed double
Additional Berths	Make up single

Engine Specification

Engine Make	Isuzu 35
No. Of Cylinders	4
Keel, Water or Air Cooled	Keel Cooled
Gearbox Make	Prm 120
Aqua Drive	No
Bow Thruster	No
Diesel Tank Capacity	35 gallons

Hot Water & Heating Systems

Source of Hot Water	Eberspacher
Central Heating	Eberspacher
Solid Fuel Stove	Morso squirell
Water Tank Capacity	120 gallons
Material used	Stainless steel
Additional Systems	-

Electrical System & Components

12 Volt Lighting	Yes
240 Volt Landline	Yes
Inverter	Sterling 3000watt
Generator	-
Batteries	3 domestic 1 starter
Additional Systems	-

Bathroom Specification

Type Of Toilet	Thetford cassette
Bath Fitted	No
Separate Shower Fitted	Yes
Vanity Basin Fitted	Yes
Additional Systems	-

Kitchen Specification

Make & Model Of Cooker	Vanette GG7000
Separate Hob	Vanette 4000/2
Microwave Fitted	Yes
Make & Model Of Fridge	Shoreline
Gas, 12 volt or 240 volt	12 volt
Additional Systems	Candy washing machine

Fit Out Materials

Insulation Used
Types Of Wood Used
Window Types
Materials Used
Bulls Eye, Pigeon Box or Houdini Hatch
Exterior Doors
Side Hatches
Front & Back Covers

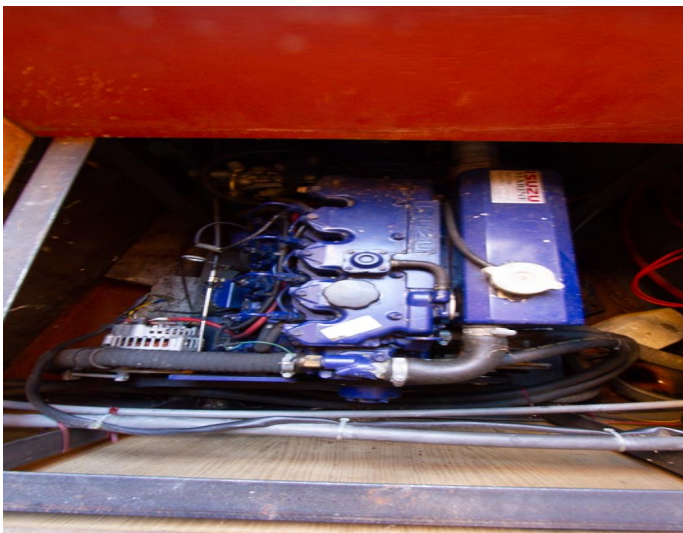
Spray Foam
Oak
Porthole
Gold Anodised
-
Front - Steel , Back - Steel
Yes
No

History Of Vessel

Boat Safety Certificate
Last Hull Blacking
Anodes
Further Maintenance
Recent Survey
Additional Information

New with sale
2017
-
-
-
-





Whilton Locks, Near Daventry,
Northants, NN11 2NH
01327 842577
sales@whiltonmarina.co.uk
www.whiltonmarina.co.uk

**For further information please see
a member of the sales team.**

It is the responsibility of the buyer to ensure that all particulars given in the course of the purchase of the boat are accurate. Such particulars are intended only as a guide and do not constitute a term of any contract.

