



## 60ft, Collingwood, 2016, Widebeam Style Boat



**BERTHS:**

4



**TOILET:**

Jabsco Pumpout



**HEATING:**

Webasto



**SURVEY:**

November 2020



**B.S.C:**

New with sale



**BLACKING:**

November 2020



**ENGINE:**

Canaline 52hp



**LAYOUT:**

Reverse

**Whilton**  
marina

Whilton Locks, Near Daventry,  
Northants, NN11 2NH

01327 842577

[sales@whiltonmarina.co.uk](mailto:sales@whiltonmarina.co.uk)

[www.whiltonmarina.co.uk](http://www.whiltonmarina.co.uk)

**For further information please see  
a member of the sales team.**

It is the responsibility of the buyer to ensure that all particulars given in the course of the purchase of the boat are accurate. Such particulars are intended only as a guide and do not constitute a term of any contract.



## Boat Specification

Plating Specification	10/6/5/4
Flat, V-Hull or Keeled	Flat Hull
Fitted out By	Collingwood/Whilton Marina
Fixed Berths	2 Fixed double
Additional Berths	-

## Engine Specification

Engine Make	Canaline 52hp
No. Of Cylinders	4 (Engine hours 412.4)
Keel, Water or Air Cooled	Keel Cooled
Gearbox Make	Prm 150
Aqua Drive	No
Bow Thruster	Yes
Diesel Tank Capacity	50 gallons

## Hot Water & Heating Systems

Source of Hot Water	Engine, Webasto & Immersion
Central Heating	Webasto
Solid Fuel Stove	Morso squirell
Water Tank Capacity	150 gallons
Material used	Stainless steel
Additional Systems	-

## Electrical System & Components

12 Volt Lighting	Yes
240 Volt Landline	Yes
Inverter	Sterling Pro Combi 2500watt
Generator	-
Batteries	3 domestic 1 starter 2 bow thruster
Additional Systems	-

## Bathroom Specification

Type Of Toilet	Jabsco Pumpout
Bath Fitted	No
Separate Shower Fitted	Yes
Vanity Basin Fitted	Yes
Additional Systems	-

## Kitchen Specification

Make & Model Of Cooker	Belling
Separate Hob	Belling
Microwave Fitted	-
Make & Model Of Fridge	Beko
Gas, 12 volt or 240 volt	240 volt
Additional Systems	Freezer

## Fit Out Materials

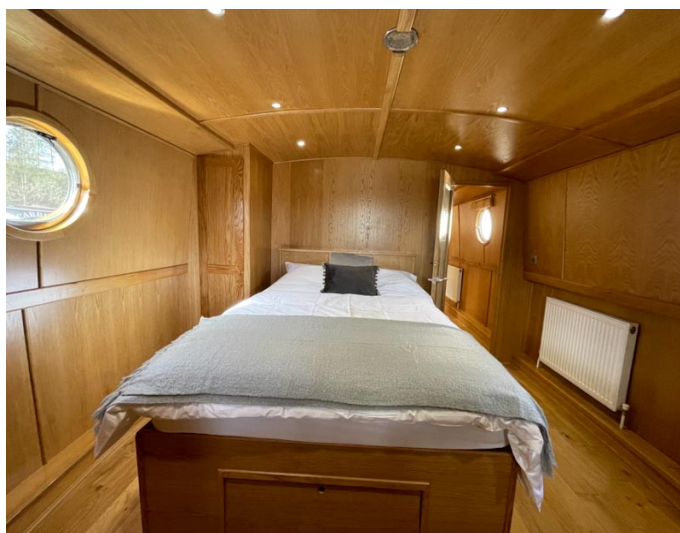
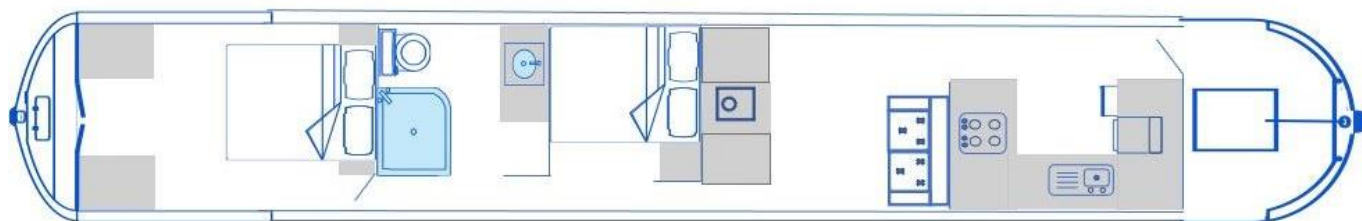
Insulation Used  
Types Of Wood Used  
Window Types  
Materials Used  
Bulls Eye, Pigeon Box or Houdini Hatch  
Exterior Doors  
Side Hatches  
Front & Back Covers

Spray Foam  
Oak  
Hopper  
Aluminium  
-  
Front - Wood, Back - Steel  
Yes  
Front cover and back pram cover

## History Of Vessel

Boat Safety Certificate  
Last Hull Blacking  
Anodes  
Further Maintenance  
Recent Survey  
Additional Information

New with sale  
November 2020  
New November 2020  
-  
November 2020  
-







Whilton Locks, Near Daventry,  
Northants, NN11 2NH  
01327 842577  
[sales@whiltonmarina.co.uk](mailto:sales@whiltonmarina.co.uk)  
[www.whiltonmarina.co.uk](http://www.whiltonmarina.co.uk)

**For further information please see  
a member of the sales team.**

It is the responsibility of the buyer to ensure that all particulars given in the course of the purchase of the boat are accurate. Such particulars are intended only as a guide and do not constitute a term of any contract.

