



50ft, Victory, 2016, Cruiser Style



BERTHS:

4



TOILET:

Simploo compost



HEATING:

Diesel heater



SURVEY:

March 2022



B.S.C:

May 2025



BLACKING:

Aug 2024



ENGINE:

Canaline 42



LAYOUT:

Reverse

Whilton
marina

Whilton Locks, Near Daventry,
Northants, NN11 2NH

01327 842577

sales@whiltonmarina.co.uk

www.whiltonmarina.co.uk

**For further information please see
a member of the sales team.**

It is the responsibility of the buyer to ensure that all particulars given in the course of the purchase of the boat are accurate. Such particulars are intended only as a guide and do not constitute a term of any contract.



Boat Specification

Plating Specification	10/6/4
Flat, V-Hull or Keeled	Flat Hull
Fitted out By	Owner
Fixed Berths	Fixed double
Additional Berths	Sofa bed

Engine Specification

Engine Make	Canaline 42
No. Of Cylinders	4
Keel, Water or Air Cooled	Keel Cooled
Gearbox Make	Canaline
Aqua Drive	No
Bow Thruster	No
Diesel Tank Capacity	unknown

Hot Water & Heating Systems

Source of Hot Water	Engine
Central Heating	Diesel heater
Solid Fuel Stove	Mazona
Water Tank Capacity	400 litres approx
Material used	Stainless steel
Additional Systems	-

Electrical System & Components

12 Volt Lighting	Yes
240 Volt Landline	Yes
Inverter	Victron Multiplus 12/1600/70
Generator	-
Batteries	4 domestic, 1 starter
Additional Systems	2 x 325w solar panels, MPPT charger

Bathroom Specification

Type Of Toilet	Simploo compost
Bath Fitted	No
Separate Shower Fitted	Yes
Vanity Basin Fitted	Yes
Additional Systems	-

Kitchen Specification

Make & Model Of Cooker	Haden HSGX gas cooker
Separate Hob	SIA AMZBF30BL
Microwave Fitted	-
Make & Model Of Fridge	Yes
Gas, 12 volt or 240 volt	12v
Additional Systems	Beko washer dryer

Fit Out Materials

Insulation Used

Types Of Wood Used

Window Types

Materials Used

Bulls Eye, Pigeon Box or Houdini Hatch

Exterior Doors

Side Hatches

Front & Back Covers

Sprayfoam

Oak throughout

Hopper

Aluminium

-

Front - Steel, Back - Steel

Yes x 2

Front cratch and cover, pram cover

History Of Vessel

Boat Safety Certificate

Last Hull Blacking

Anodes

Further Maintenance

Recent Survey

Additional Information

RCD/RCR Compliant?

Further Information

May 2025

Aug 2024

May 2021

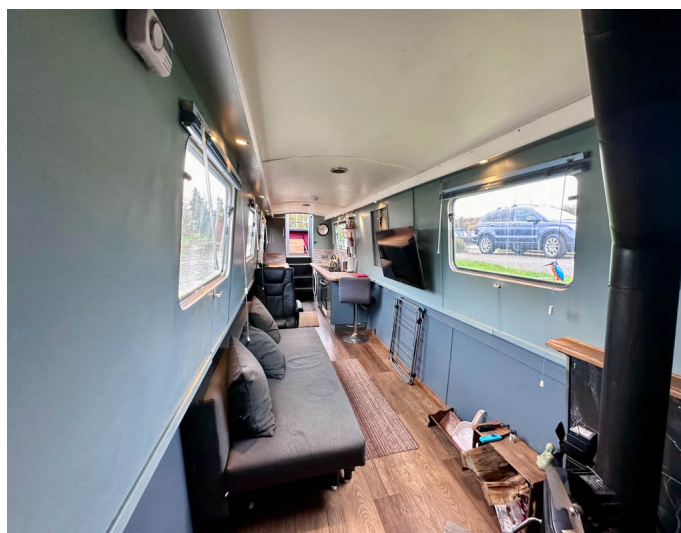
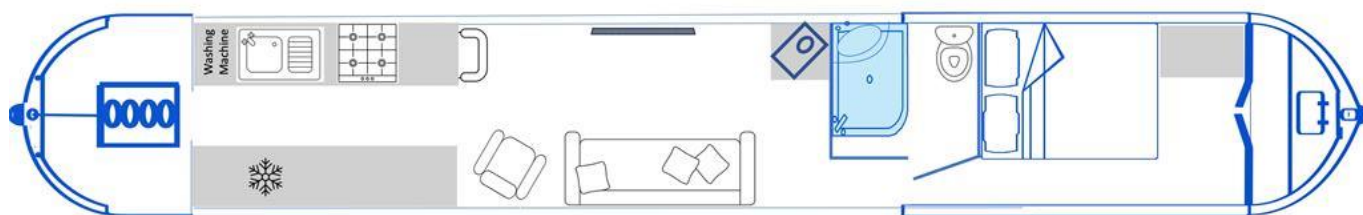
New wiring throughout boat

March 2022

-

No

-





Whilton Locks, Near Daventry,
Northants, NN11 2NH
01327 842577
sales@whiltonmarina.co.uk
www.whiltonmarina.co.uk

**For further information please see
a member of the sales team.**

It is the responsibility of the buyer to ensure that all particulars given in the course of the purchase of the boat are accurate. Such particulars are intended only as a guide and do not constitute a term of any contract.

