



Requires hull and internal remedial work

60ft, Mike Haywood, 1992, Traditional Style



**BERTHS:**

3



**TOILET:**

Cassette



**HEATING:**

-



**SURVEY:**

-



**B.S.C:**

Expires February  
2024



**BLACKING:**

2018



**ENGINE:**

Perkins 3152



**LAYOUT:**

Standard

**Whilton  
marina**

Whilton Locks, Near Daventry,  
Northants, NN11 2NH

01327 842577

[sales@whiltonmarina.co.uk](mailto:sales@whiltonmarina.co.uk)

[www.whiltonmarina.co.uk](http://www.whiltonmarina.co.uk)

**For further information please see  
a member of the sales team.**

It is the responsibility of the buyer to ensure that all particulars given in the course of the purchase of the boat are accurate. Such particulars are intended only as a guide and do not constitute a term of any contract.



## Boat Specification

Plating Specification	10/6/4 mm
Flat, V-Hull or Keeled	Flat Hull
Fitted out By	-
Fixed Berths	One fixed double
Additional Berths	Sofa Bed

## Engine Specification

Engine Make	Perkins 3152
No. Of Cylinders	3 cyl
Keel, Water or Air Cooled	Keel Cooled
Gearbox Make	PRM 150
Aqua Drive	No
Bow Thruster	No
Diesel Tank Capacity	45 Gallons

## Hot Water & Heating Systems

Source of Hot Water	Calorifer/immersion heater
Central Heating	-
Solid Fuel Stove	Yes, Morso Squirrel
Water Tank Capacity	100 Gallons approx
Material used	Integral steel
Additional Systems	-

## Electrical System & Components

12 Volt Lighting	Yes
240 Volt Landline	Yes
Inverter	ARD 600W
Generator	-
Batteries	Three domestic and one starter
Additional Systems	-

## Bathroom Specification

Type Of Toilet	Cassette
Bath Fitted	-
Separate Shower Fitted	Yes
Vanity Basin Fitted	Yes
Additional Systems	-

## Kitchen Specification

Make & Model Of Cooker	Yes
Separate Hob	-
Microwave Fitted	-
Make & Model Of Fridge	Shoreline
Gas, 12 volt or 240 volt	12v
Additional Systems	-

## Fit Out Materials

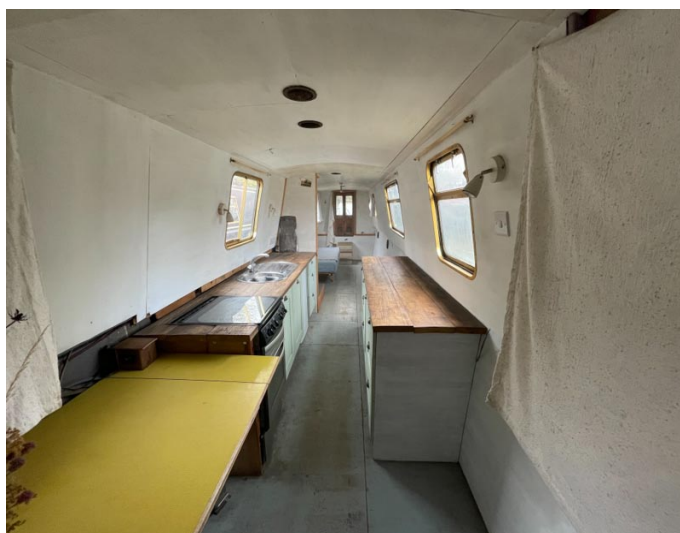
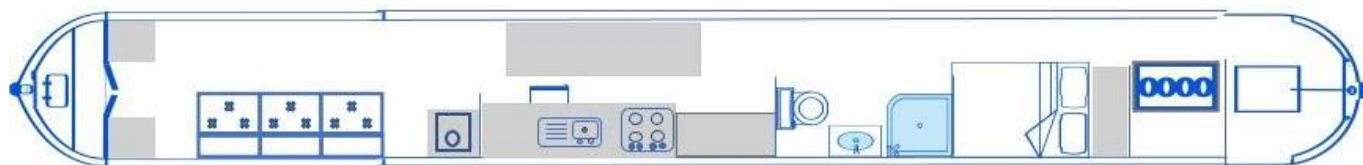
Insulation Used  
Types Of Wood Used  
Window Types  
Materials Used  
Bulls Eye, Pigeon Box or Houdini Hatch  
Exterior Doors  
Side Hatches  
Front & Back Covers

Polystyrene  
Ply- Pine  
Hopper & port hole  
Gold Anodised  
-  
Front - Wood, Back - Steel  
Yes x 2  
Front cratch cover

## History Of Vessel

Boat Safety Certificate  
Last Hull Blacking  
Anodes  
Further Maintenance  
Recent Survey  
Additional Information

Expires February 2024  
2018  
Checked 2018  
Engine serviced regularly  
-  
Requires hull and internal remedial work





Whilton Locks, Near Daventry,  
Northants, NN11 2NH  
01327 842577  
[sales@whiltonmarina.co.uk](mailto:sales@whiltonmarina.co.uk)  
[www.whiltonmarina.co.uk](http://www.whiltonmarina.co.uk)

**For further information please see  
a member of the sales team.**

It is the responsibility of the buyer to ensure that all particulars given in the course of the purchase of the boat are accurate. Such particulars are intended only as a guide and do not constitute a term of any contract.