



60ft, Heron Boatbuilders, 2001, Cruiser Style



BERTHS:

6



TOILET:

Porta potti



HEATING:

Mikuni



SURVEY:

-



B.S.C:

Expires July 2023



BLACKING:

2017



ENGINE:

Isuzu 38HP



LAYOUT:

Standard

**Whilton
marina**

Whilton Locks, Near Daventry,
Northants, NN11 2NH

01327 842577

sales@whiltonmarina.co.uk

www.whiltonmarina.co.uk

**For further information please see
a member of the sales team.**

It is the responsibility of the buyer to ensure that all particulars given in the course of the purchase of the boat are accurate. Such particulars are intended only as a guide and do not constitute a term of any contract.



Boat Specification

Plating Specification	10/6/5/4
Flat, V-Hull or Keeled	Flat Hull
Fitted out By	Heron Boatbuilders
Fixed Berths	Fixed double
Additional Berths	Dinette , L Shape

Engine Specification

Engine Make	Isuzu 38HP
No. Of Cylinders	4
Keel, Water or Air Cooled	Keel Cooled
Gearbox Make	Prm 150
Aqua Drive	No
Bow Thruster	No
Diesel Tank Capacity	40 gallons

Hot Water & Heating Systems

Source of Hot Water	Mikuni
Central Heating	Mikuni
Solid Fuel Stove	Yes
Water Tank Capacity	120 gallons
Material used	Polypropylene
Additional Systems	-

Electrical System & Components

12 Volt Lighting	Yes
240 Volt Landline	Yes
Inverter	Victron Phoenix 2000watt
Generator	-
Batteries	4 domestic 1 starter
Additional Systems	-

Bathroom Specification

Type Of Toilet	Porta potti
Bath Fitted	No
Separate Shower Fitted	Yes
Vanity Basin Fitted	Yes
Additional Systems	-

Kitchen Specification

Make & Model Of Cooker	Vanette GG7000
Separate Hob	Vanette 4000/2
Microwave Fitted	-
Make & Model Of Fridge	Lec
Gas, 12 volt or 240 volt	240 volt
Additional Systems	-

Fit Out Materials

Insulation Used

Types Of Wood Used

Window Types

Materials Used

Bulls Eye, Pigeon Box or Houdini Hatch

Exterior Doors

Side Hatches

Front & Back Covers

Rockwool

Oak

Hopper

Gold Anodised

-

Front - Wood , Back - Steel

Yes

Front cratch & cover - back cover

History Of Vessel

Boat Safety Certificate

Last Hull Blacking

Anodes

Further Maintenance

Recent Survey

Additional Information

Expires July 2023

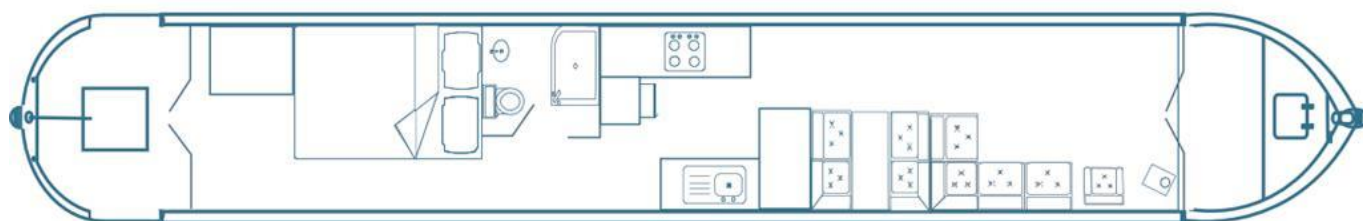
2017

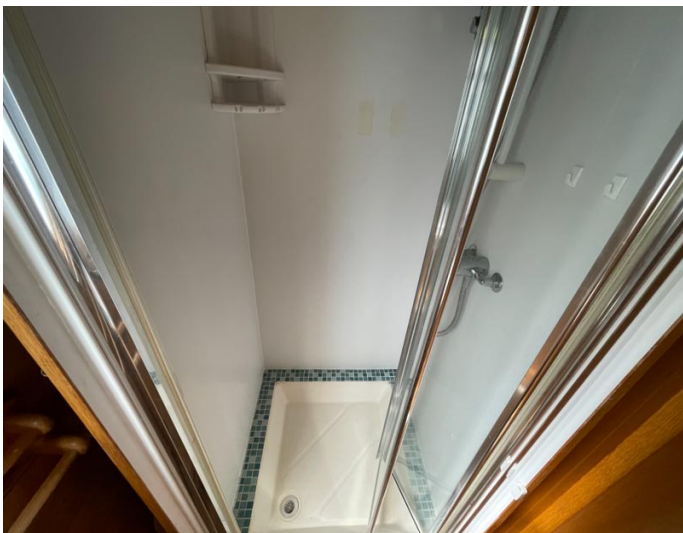
2017

-

-

-





Whilton Locks, Near Daventry,
Northants, NN11 2NH
01327 842577
sales@whiltonmarina.co.uk
www.whiltonmarina.co.uk

**For further information please see
a member of the sales team.**

It is the responsibility of the buyer to ensure that all particulars given in the course of the purchase of the boat are accurate. Such particulars are intended only as a guide and do not constitute a term of any contract.