



## 45ft, Alvenchurch Boat, 1991, Cruiser Style



### BERTHS:

Two



### TOILET:

Thetford Cassette



### HEATING:

-



### SURVEY:

September 2020



### B.S.C:

Expires September  
2022



### BLACKING:

December 2020



### ENGINE:

Isuzu 38



### LAYOUT:

Reverse

**Whilton**  
marina

Whilton Locks, Near Daventry,  
Northants, NN11 2NH

01327 842577

[sales@whiltonmarina.co.uk](mailto:sales@whiltonmarina.co.uk)

[www.whiltonmarina.co.uk](http://www.whiltonmarina.co.uk)

**For further information please see  
a member of the sales team.**

It is the responsibility of the buyer to ensure that all particulars given in the course of the purchase of the boat are accurate. Such particulars are intended only as a guide and do not constitute a term of any contract.



## Boat Specification

Plating Specification	10/6/4mm
Flat, V-Hull or Keeled	Flat Hull
Fitted out By	Alvenchurch Boat
Fixed Berths	Fixed Double
Additional Berths	-

## Engine Specification

Engine Make	Isuzu 38
No. Of Cylinders	3
Keel, Water or Air Cooled	Keel Cooled
Gearbox Make	-
Aqua Drive	No
Bow Thruster	No
Diesel Tank Capacity	200 Litres

## Hot Water & Heating Systems

Source of Hot Water	Engine & Morco Eco Plus
Central Heating	-
Solid Fuel Stove	AX Multi-fuel
Water Tank Capacity	-
Material used	Stainless Steel
Additional Systems	-

## Electrical System & Components

12 Volt Lighting	Yes
240 Volt Landline	Yes
Inverter	Ring 600w
Generator	-
Batteries	Three Domestic & One Starter
Additional Systems	TV

## Bathroom Specification

Type Of Toilet	Thetford Cassette
Bath Fitted	Yes
Separate Shower Fitted	Over the bath
Vanity Basin Fitted	Yes
Additional Systems	-

## Kitchen Specification

Make & Model Of Cooker	Statesman Legacy
Separate Hob	-
Microwave Fitted	-
Make & Model Of Fridge	Yes
Gas, 12 volt or 240 volt	12 Volt
Additional Systems	-

## Fit Out Materials

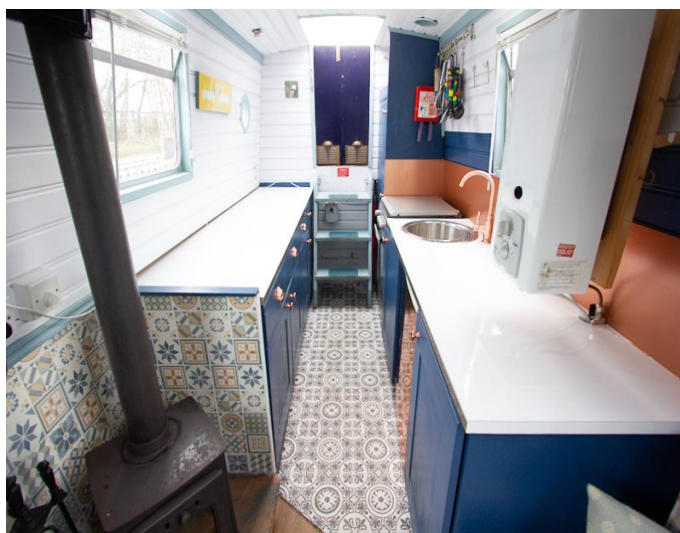
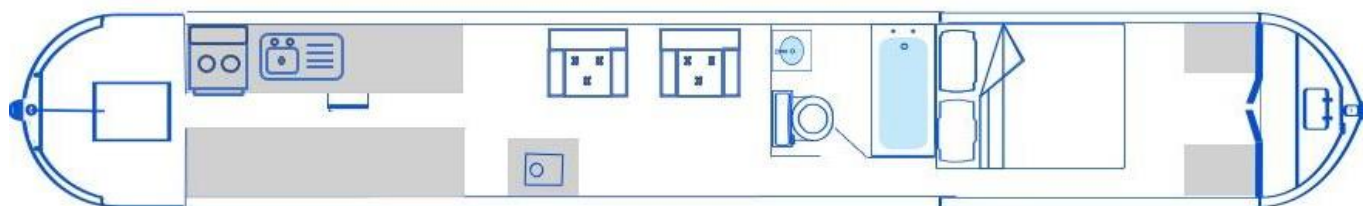
Insulation Used  
Types Of Wood Used  
Window Types  
Materials Used  
Bulls Eye, Pigeon Box or Houdini Hatch  
Exterior Doors  
Side Hatches  
Front & Back Covers

Spray Foam  
T&G  
Hopper  
Aluminium  
-  
Front - Wood, Back - Wood  
-  
Front cover

## History Of Vessel

Boat Safety Certificate  
Last Hull Blacking  
Anodes  
Further Maintenance  
Recent Survey  
Additional Information

Expires September 2022  
December 2020  
-  
Bow section replaced Dec 2020  
September 2020  
-





Whilton Locks, Near Daventry,  
Northants, NN11 2NH  
01327 842577  
sales@whiltonmarina.co.uk  
www.whiltonmarina.co.uk

**For further information please see  
a member of the sales team.**

It is the responsibility of the buyer to ensure that all particulars given in the course of the purchase of the boat are accurate. Such particulars are intended only as a guide and do not constitute a term of any contract.

