



## 50ft, Steve Emery, 2008, Traditional Style



### BERTHS:

4



### TOILET:

Thetford Casette



### HEATING:

MV Hydro 5 diesel heater



### SURVEY:

November 2017



### B.S.C:

February 2028



### BLACKING:

June 2023



### ENGINE:

Kingfisher KD26



### LAYOUT:

Reverse

**Whilton**  
marina

Whilton Locks, Near Daventry,  
Northants, NN11 2NH

01327 842577

[sales@whiltonmarina.co.uk](mailto:sales@whiltonmarina.co.uk)

[www.whiltonmarina.co.uk](http://www.whiltonmarina.co.uk)

**For further information please see  
a member of the sales team.**

It is the responsibility of the buyer to ensure that all particulars given in the course of the purchase of the boat are accurate. Such particulars are intended only as a guide and do not constitute a term of any contract.



## Boat Specification

Plating Specification	10/6/4
Flat, V-Hull or Keeled	Flat Hull
Fitted out By	Paul Cailey Boats
Fixed Berths	fixed double
Additional Berths	pull out double

## Engine Specification

Engine Make	Kingfisher KD26
No. Of Cylinders	2
Keel, Water or Air Cooled	Keel Cooled
Gearbox Make	Kingfisher MA100
Aqua Drive	No
Bow Thruster	No
Diesel Tank Capacity	90 gallons

## Hot Water & Heating Systems

Source of Hot Water	Engine and diesel heater
Central Heating	MV Hydro 5 diesel heater
Solid Fuel Stove	Boatman 3R
Water Tank Capacity	150 gallons
Material used	Integral
Additional Systems	-

## Electrical System & Components

12 Volt Lighting	Yes
240 Volt Landline	Yes
Inverter	Sterling 1600
Generator	-
Batteries	4 domestic, 1 starter
Additional Systems	410w solar panels with victron smart solar controller. 70amp alternator, Sterling P-DAR

## Bathroom Specification

Type Of Toilet	Thetford Casette
Bath Fitted	-
Separate Shower Fitted	Yes
Vanity Basin Fitted	Yes
Additional Systems	-

## Kitchen Specification

Make & Model Of Cooker	SMEV 400
Separate Hob	-
Microwave Fitted	-
Make & Model Of Fridge	Inland RIR 402A
Gas, 12 volt or 240 volt	12v
Additional Systems	-



## Fit Out Materials

Insulation Used

Types Of Wood Used

Window Types

Materials Used

Bulls Eye, Pigeon Box or Houdini Hatch

Exterior Doors

Side Hatches

Front & Back Covers

Sprayfoam and rockwool

Redwood, hardwood, oak plywood and pine

Portholes + windows

-

Bullseye, Pigeon box

, Back - steel

Yes

-

## History Of Vessel

Boat Safety Certificate

Last Hull Blacking

Anodes

Further Maintenance

Recent Survey

Additional Information

RCD/RCR Compliant?

Further Information

February 2028

June 2023

May 2021

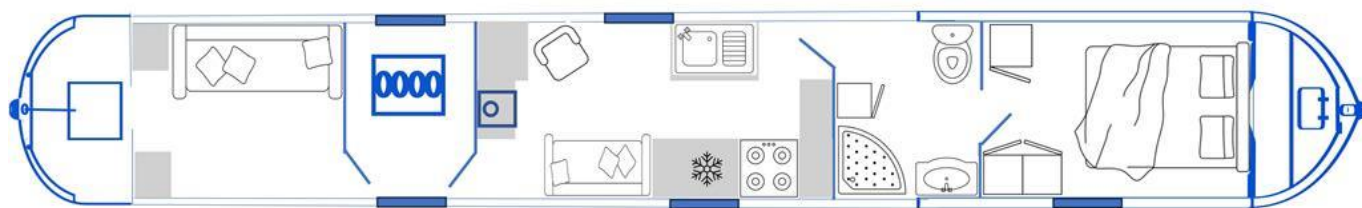
Engine serviced June 2023

November 2017

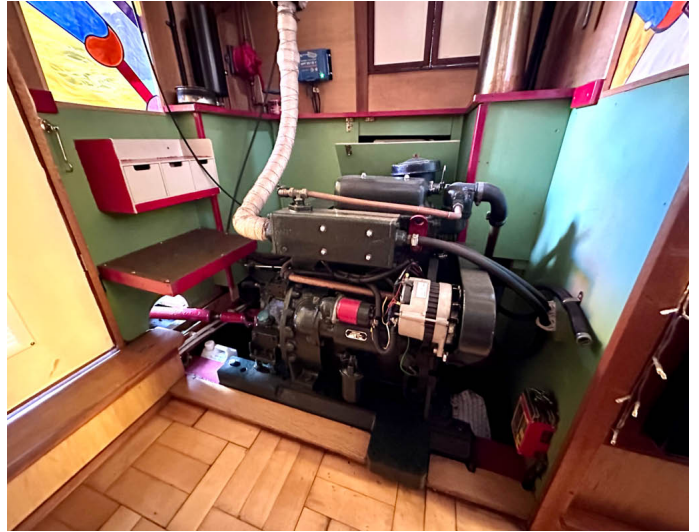
-

Not Applicable

-







Whilton Locks, Near Daventry,  
Northants, NN11 2NH  
01327 842577  
sales@whiltonmarina.co.uk  
www.whiltonmarina.co.uk

**For further information please see  
a member of the sales team.**

It is the responsibility of the buyer to ensure that all particulars given in the course of the purchase of the boat are accurate. Such particulars are intended only as a guide and do not constitute a term of any contract.

