



Hull to be insurable

61ft, Colecraft, 1976, Traditional Style



BERTHS:

Three



TOILET:

Cassette



HEATING:

-



SURVEY:

October 2019



B.S.C:

New with sale



BLACKING:

-



ENGINE:

BMC 1.5



LAYOUT:

Standard

**Whilton
marina**

Whilton Locks, Near Daventry,
Northants, NN11 2NH

01327 842577

sales@whiltonmarina.co.uk

www.whiltonmarina.co.uk

**For further information please see
a member of the sales team.**

It is the responsibility of the buyer to ensure that all particulars given in the course of the purchase of the boat are accurate. Such particulars are intended only as a guide and do not constitute a term of any contract.



Boat Specification

Plating Specification	-
Flat, V-Hull or Keeled	Flat Hull
Fitted out By	Professional
Fixed Berths	Fixed Double
Additional Berths	1 x Childs Bunk

Engine Specification

Engine Make	BMC 1.5
No. Of Cylinders	4
Keel, Water or Air Cooled	Keel Cooled
Gearbox Make	PRM
Aqua Drive	No
Bow Thruster	No
Diesel Tank Capacity	40 Gallons Approx

Hot Water & Heating Systems

Source of Hot Water	Gas water heater
Central Heating	-
Solid Fuel Stove	Yes
Water Tank Capacity	-
Material used	Integral
Additional Systems	-

Electrical System & Components

12 Volt Lighting	Yes
240 Volt Landline	Yes
Inverter	-
Generator	-
Batteries	Two Domestics & One Starter
Additional Systems	-

Bathroom Specification

Type Of Toilet	Cassette
Bath Fitted	Yes
Separate Shower Fitted	Over the bath
Vanity Basin Fitted	Yes
Additional Systems	-

Kitchen Specification

Make & Model Of Cooker	Vanette 5000SL
Separate Hob	-
Microwave Fitted	-
Make & Model Of Fridge	LEC
Gas, 12 volt or 240 volt	12 Volt
Additional Systems	-

Fit Out Materials

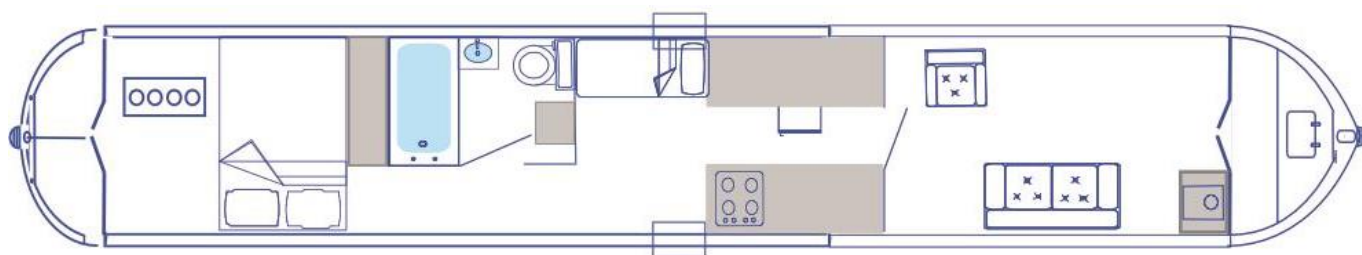
Insulation Used
Types Of Wood Used
Window Types
Materials Used
Bulls Eye, Pigeon Box or Houdini Hatch
Exterior Doors
Side Hatches
Front & Back Covers

Polystyrene
Pine T&G
Hopper
Aluminium
-
Front - Wood, Back - Wood
Yes
-

History Of Vessel

Boat Safety Certificate
Last Hull Blacking
Anodes
Further Maintenance
Recent Survey
Additional Information

New with sale
-
-
-
October 2019
Hull to be insurable





Whilton Locks, Near Daventry,
Northants, NN11 2NH
01327 842577
sales@whiltonmarina.co.uk
www.whiltonmarina.co.uk

**For further information please see
a member of the sales team.**

It is the responsibility of the buyer to ensure that all particulars given in the course of the purchase of the boat are accurate. Such particulars are intended only as a guide and do not constitute a term of any contract.

