



58ft, Bridgewater Boats, 1984, Traditional Style



BERTHS:

4



TOILET:

Thetford cassette



HEATING:

Eberspacher



SURVEY:

May 2019



B.S.C:

Expires November
2021



BLACKING:

April 2019



ENGINE:

Barrus Shire 35



LAYOUT:

Standard

**Whilton
marina**

Whilton Locks, Near Daventry,
Northants, NN11 2NH

01327 842577

sales@whiltonmarina.co.uk

www.whiltonmarina.co.uk

**For further information please see
a member of the sales team.**

It is the responsibility of the buyer to ensure that all particulars given in the course of the purchase of the boat are accurate. Such particulars are intended only as a guide and do not constitute a term of any contract.



Boat Specification

Plating Specification
Flat, V-Hull or Keeled
Fitted out By
Fixed Berths
Additional Berths

6/6/4
Flat Hull
Bridgewater Boats
Fixed double
Pullout

Engine Specification

Engine Make
No. Of Cylinders
Keel, Water or Air Cooled
Gearbox Make
Aqua Drive
Bow Thruster
Diesel Tank Capacity

Barrus Shire 35
4
Keel Cooled
Prm 150
No
No
25 Litres

Hot Water & Heating Systems

Source of Hot Water
Central Heating
Solid Fuel Stove
Water Tank Capacity
Material used
Additional Systems

Eberspacher & engine
Eberspacher
Morso squirell
100 gallons
Stainless steel
-

Electrical System & Components

12 Volt Lighting
240 Volt Landline
Inverter
Generator
Batteries
Additional Systems

Yes
Yes
Yes 1800watt
-
3 domestic 1 starter
-

Bathroom Specification

Type Of Toilet
Bath Fitted
Separate Shower Fitted
Vanity Basin Fitted
Additional Systems

Thetford cassette
No
Yes
Yes
-

Kitchen Specification

Make & Model Of Cooker
Separate Hob
Microwave Fitted
Make & Model Of Fridge
Gas, 12 volt or 240 volt
Additional Systems

Vanette GG7000
Vanette 4000/2
-
Shoreline
12 volt
-

Fit Out Materials

Insulation Used

Types Of Wood Used

Window Types

Materials Used

Bulls Eye, Pigeon Box or Houdini Hatch

Exterior Doors

Side Hatches

Front & Back Covers

Polystyrene

Oak

Hopper

Gold Anodised

-

Front - Wood, Back - Steel

Yes

No

History Of Vessel

Boat Safety Certificate

Last Hull Blacking

Anodes

Further Maintenance

Recent Survey

Additional Information

Expires November 2021

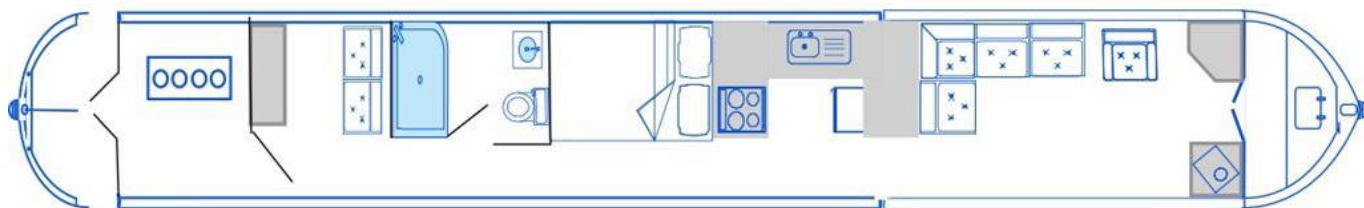
April 2019

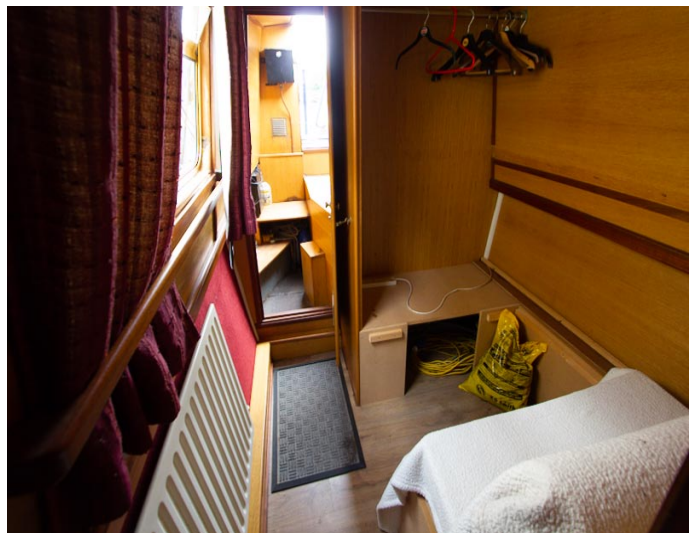
April 2019

Engine and Eberspacher service 2019

May 2019

-





Whilton Locks, Near Daventry,
Northants, NN11 2NH
01327 842577
sales@whiltonmarina.co.uk
www.whiltonmarina.co.uk

**For further information please see
a member of the sales team.**

It is the responsibility of the buyer to ensure that all particulars given in the course of the purchase of the boat are accurate. Such particulars are intended only as a guide and do not constitute a term of any contract.

