



New Engine Dec 2019

40ft, Dartline, 1984, Cruiser Style



BERTHS:

Three



TOILET:

Thetford Cassette



HEATING:

-



SURVEY:

June 2018



B.S.C:

January 2022



BLACKING:

August 2018



ENGINE:

Lister SR2



LAYOUT:

Standard

**Whilton
marina**

Whilton Locks, Near Daventry,
Northants, NN11 2NH

01327 842577

sales@whiltonmarina.co.uk

www.whiltonmarina.co.uk

**For further information please see
a member of the sales team.**

It is the responsibility of the buyer to ensure that all particulars given in the course of the purchase of the boat are accurate. Such particulars are intended only as a guide and do not constitute a term of any contract.



Boat Specification

Plating Specification	6/5/3mm (overplated 2006)
Flat, V-Hull or Keeled	Flat Hull
Fitted out By	Anglo Welsh
Fixed Berths	-
Additional Berths	Three Make Up Singles

Engine Specification

Engine Make	Lister SR2
No. Of Cylinders	Three
Keel, Water or Air Cooled	Air Cooled
Gearbox Make	Lister Blackstone
Aqua Drive	-
Bow Thruster	No
Diesel Tank Capacity	40 gallons

Hot Water & Heating Systems

Source of Hot Water	Morco
Central Heating	-
Solid Fuel Stove	Stovax
Water Tank Capacity	100 gallons
Material used	Integral steel
Additional Systems	-

Electrical System & Components

12 Volt Lighting	Yes
240 Volt Landline	Yes
Inverter	-
Generator	-
Batteries	2 domestic & 1 starter
Additional Systems	-

Bathroom Specification

Type Of Toilet	Thetford Cassette
Bath Fitted	-
Separate Shower Fitted	Yes
Vanity Basin Fitted	Yes
Additional Systems	-

Kitchen Specification

Make & Model Of Cooker	Thetford Caprice
Separate Hob	-
Microwave Fitted	-
Make & Model Of Fridge	Fridgedaire
Gas, 12 volt or 240 volt	12 volt
Additional Systems	-

Fit Out Materials

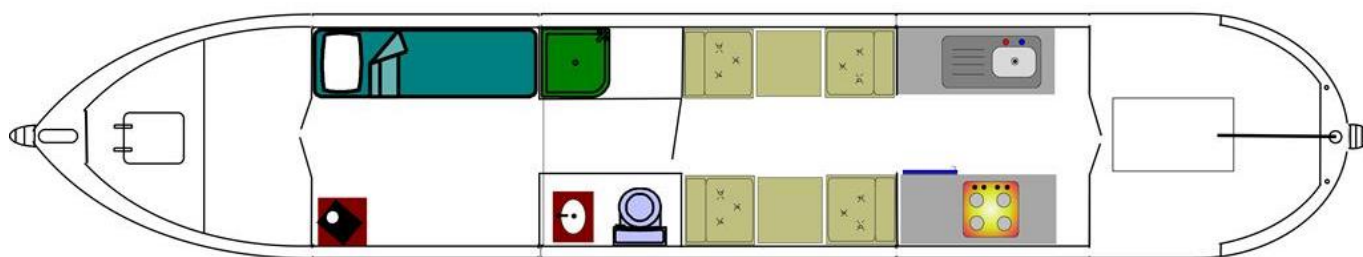
Insulation Used
Types Of Wood Used
Window Types
Materials Used
Bulls Eye, Pigeon Box or Houdini Hatch
Exterior Doors
Side Hatches
Front & Back Covers

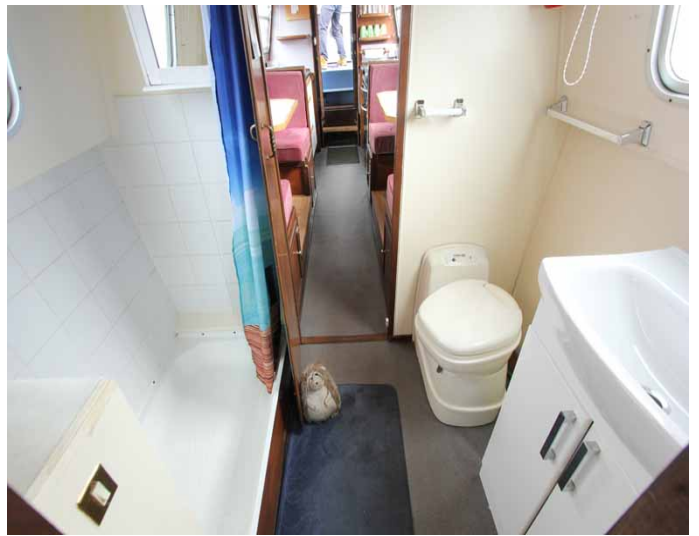
Polystyrene
Pine t&g
Hopper
Aluminium
-
-
-
Front & rear covers

History Of Vessel

Boat Safety Certificate
Last Hull Blacking
Anodes
Further Maintenance
Recent Survey
Additional Information
RCD/RCR Compliant?
Further Information

January 2022
August 2018
Checked August 2018
-
June 2018
New Engine Dec 2019
Not Applicable
-





Whilton Locks, Near Daventry,
Northants, NN11 2NH
01327 842577
sales@whiltonmarina.co.uk
www.whiltonmarina.co.uk

**For further information please see
a member of the sales team.**

It is the responsibility of the buyer to ensure that all particulars given in the course of the purchase of the boat are accurate. Such particulars are intended only as a guide and do not constitute a term of any contract.

