



38ft, Midland Canal Centre, 2005, Cruiser Style



BERTHS:

4



TOILET:

Thetford cassette



HEATING:

Mikuni



SURVEY:

-



B.S.C:

Expires August
2021



BLACKING:

2017



ENGINE:

Barrus shire



LAYOUT:

Reverse

**Whilton
marina**

Whilton Locks, Near Daventry,
Northants, NN11 2NH

01327 842577

sales@whiltonmarina.co.uk

www.whiltonmarina.co.uk

**For further information please see
a member of the sales team.**

It is the responsibility of the buyer to ensure that all particulars given in the course of the purchase of the boat are accurate. Such particulars are intended only as a guide and do not constitute a term of any contract.



Boat Specification

Plating Specification	10/6/4
Flat, V-Hull or Keeled	-
Fitted out By	MCC
Fixed Berths	Fixed double
Additional Berths	L shape

Engine Specification

Engine Make	Barrus shire
No. Of Cylinders	3
Keel, Water or Air Cooled	Keel Cooled
Gearbox Make	Prm 120
Aqua Drive	No
Bow Thruster	No
Diesel Tank Capacity	35 gallons

Hot Water & Heating Systems

Source of Hot Water	Engine & mikuni
Central Heating	Mikuni
Solid Fuel Stove	Yes
Water Tank Capacity	120 gallons
Material used	Stainless steel
Additional Systems	-

Electrical System & Components

12 Volt Lighting	Yes
240 Volt Landline	Yes
Inverter	Nikkai 800watt
Generator	-
Batteries	3 domestic
Additional Systems	1 starter

Bathroom Specification

Type Of Toilet	Thetford cassette
Bath Fitted	No
Separate Shower Fitted	Yes
Vanity Basin Fitted	Yes
Additional Systems	-

Kitchen Specification

Make & Model Of Cooker	Caprice 2040
Separate Hob	-
Microwave Fitted	-
Make & Model Of Fridge	Shoreline
Gas, 12 volt or 240 volt	12 volt
Additional Systems	-

Fit Out Materials

Insulation Used

Types Of Wood Used

Window Types

Materials Used

Bulls Eye, Pigeon Box or Houdini Hatch

Exterior Doors

Side Hatches

Front & Back Covers

Spray Foam

Oak

Hopper

Gold Anodised

-

Front - Steel, Back - Steel

No

Front cover

History Of Vessel

Boat Safety Certificate

Last Hull Blacking

Anodes

Further Maintenance

Recent Survey

Additional Information

Expires August 2021

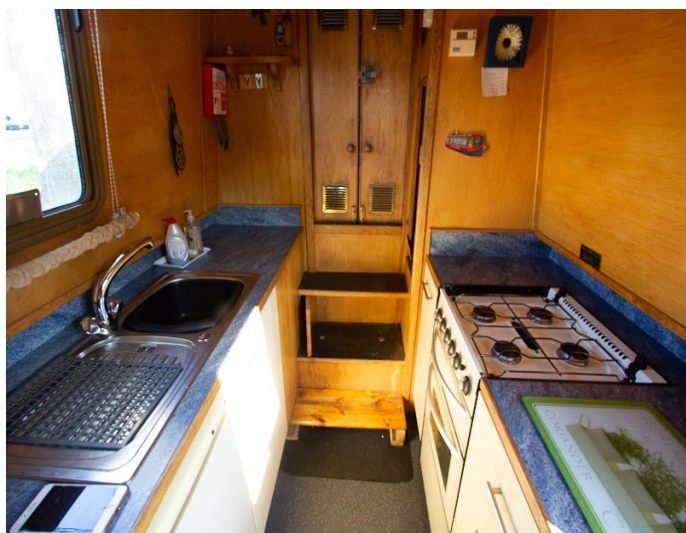
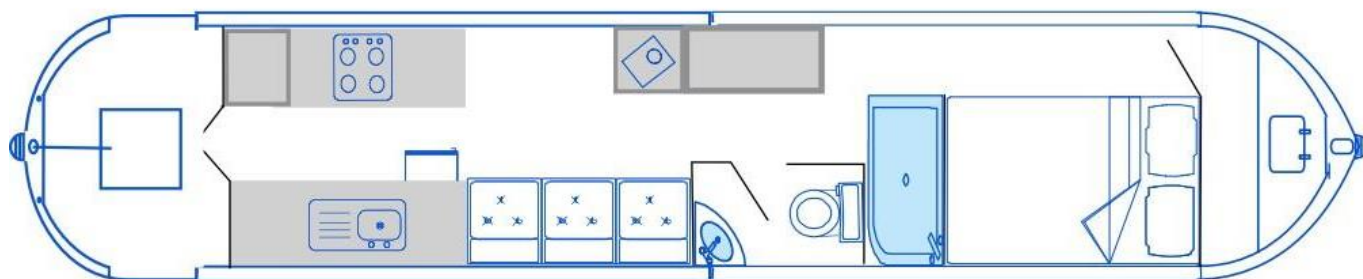
2017

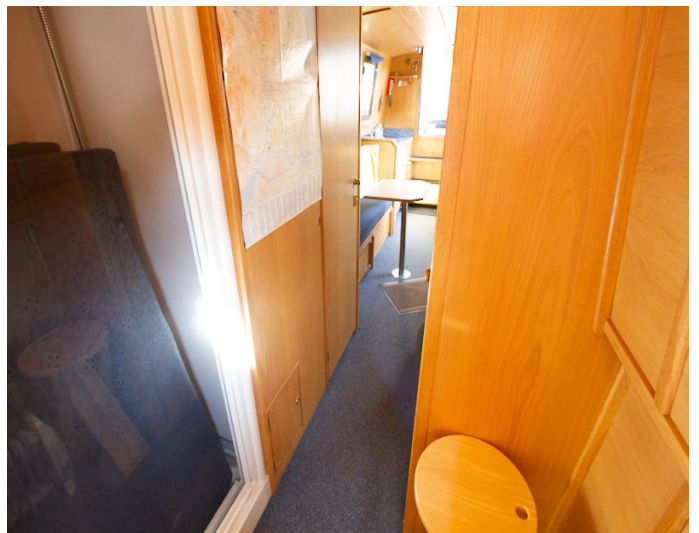
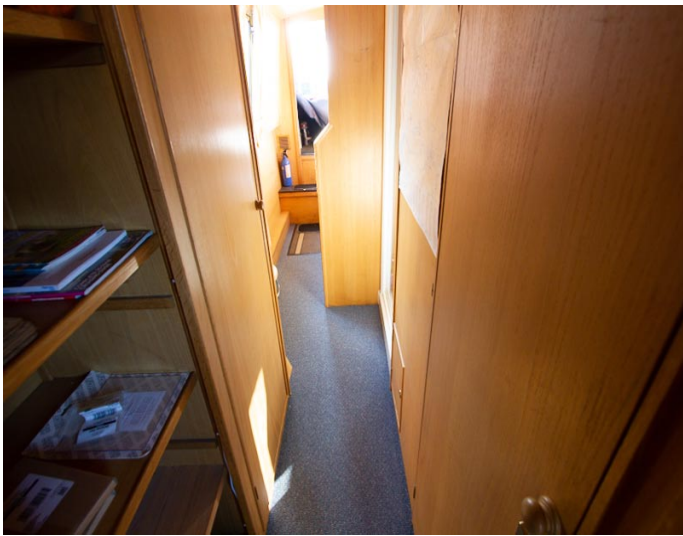
Checked 2017

-

-

-





Whilton Locks, Near Daventry,
Northants, NN11 2NH
01327 842577
sales@whiltonmarina.co.uk
www.whiltonmarina.co.uk

**For further information please see
a member of the sales team.**

It is the responsibility of the buyer to ensure that all particulars given in the course of the purchase of the boat are accurate. Such particulars are intended only as a guide and do not constitute a term of any contract.