



45ft, Reeves, 1997, Cruiser Style

**BERTHS:**

Four

**TOILET:**Mansfield Traveller
pumpout**HEATING:**

Webasto

**SURVEY:**

-

**B.S.C:**

Expires July 2021

**BLACKING:**

2015

**ENGINE:**

Beta 1305 35hp

**LAYOUT:**

Standard

Whilton
marinaWhilton Locks, Near Daventry,
Northants, NN11 2NH

01327 842577

sales@whiltonmarina.co.uk

www.whiltonmarina.co.uk

**For further information please see
a member of the sales team.**

It is the responsibility of the buyer to ensure that all particulars given in the course of the purchase of the boat are accurate. Such particulars are intended only as a guide and do not constitute a term of any contract.



Boat Specification

Plating Specification
Flat, V-Hull or Keeled
Fitted out By
Fixed Berths
Additional Berths

10/6/4
Flat Hull
Aynha Wharf
Fixed Double
L shape sofa bed

Engine Specification

Engine Make
No. Of Cylinders
Keel, Water or Air Cooled
Gearbox Make
Aqua Drive
Bow Thruster
Diesel Tank Capacity

Beta 1305 35hp
Four
Keel Cooled
PRM 150
-
No
40 Gallons

Hot Water & Heating Systems

Source of Hot Water
Central Heating
Solid Fuel Stove
Water Tank Capacity
Material used
Additional Systems

Webasto and engine
Webasto
Bubble Diesel fired
120 Gallons
Stainless steel
-

Electrical System & Components

12 Volt Lighting
240 Volt Landline
Inverter
Generator
Batteries
Additional Systems

Yes
Yes
Durite 1000
-
Three domestic and one starter
-

Bathroom Specification

Type Of Toilet
Bath Fitted
Separate Shower Fitted
Vanity Basin Fitted
Additional Systems

Mansfield Traveller pumpout
Yes
Over the Bath
Yes
-

Kitchen Specification

Make & Model Of Cooker
Separate Hob
Microwave Fitted
Make & Model Of Fridge
Gas, 12 volt or 240 volt
Additional Systems

Vanette GG7000
Vanette 4000/2
-
Coolmatic
-
-

Fit Out Materials

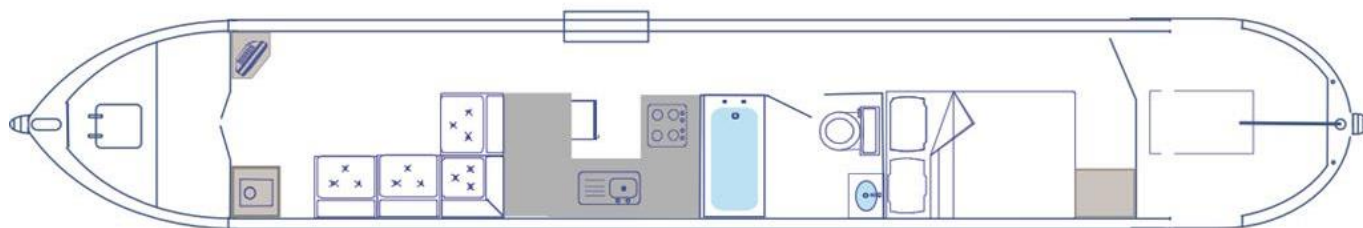
Insulation Used
Types Of Wood Used
Window Types
Materials Used
Bulls Eye, Pigeon Box or Houdini Hatch
Exterior Doors
Side Hatches
Front & Back Covers

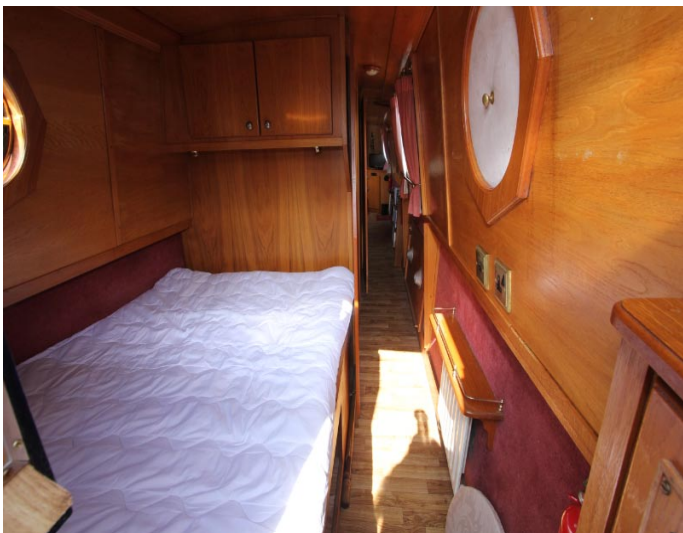
Polystyrene
Oak
Hopper
Gold Anodised
-
Front - Wood, Back - Wood
Yes
Front cover

History Of Vessel

Boat Safety Certificate
Last Hull Blacking
Anodes
Further Maintenance
Recent Survey
Additional Information

Expires July 2021
2015
2015 checked
-
-
-





Whilton Locks, Near Daventry,
Northants, NN11 2NH
01327 842577
sales@whiltonmarina.co.uk
www.whiltonmarina.co.uk

**For further information please see
a member of the sales team.**

It is the responsibility of the buyer to ensure that all particulars given in the course of the purchase of the boat are accurate. Such particulars are intended only as a guide and do not constitute a term of any contract.