



62ft, John White, 2004, Traditional Style



BERTHS:

2



TOILET:

Cassette



HEATING:

Webasto Thermo
Top C



SURVEY:

March 2023



B.S.C:

January 2029



BLACKING:

2023



ENGINE:

Beta 43



LAYOUT:

Standard

**Whilton
marina**

Whilton Locks, Near Daventry,
Northants, NN11 2NH

01327 842577

sales@whiltonmarina.co.uk

www.whiltonmarina.co.uk

**For further information please see
a member of the sales team.**

It is the responsibility of the buyer to ensure that all particulars given in the course of the purchase of the boat are accurate. Such particulars are intended only as a guide and do not constitute a term of any contract.



Boat Specification

Plating Specification	10/6/4
Flat, V-Hull or Keeled	Flat Hull
Fitted out By	Previous owner
Fixed Berths	2
Additional Berths	-

Engine Specification

Engine Make	Beta 43
No. Of Cylinders	4
Keel, Water or Air Cooled	Keel Cooled
Gearbox Make	-
Aqua Drive	No
Bow Thruster	No
Diesel Tank Capacity	110 litres approx

Hot Water & Heating Systems

Source of Hot Water	Engine
Central Heating	Webasto Thermo Top C
Solid Fuel Stove	Multi fuel stove
Water Tank Capacity	Unknown
Material used	Stainless steel
Additional Systems	-

Electrical System & Components

12 Volt Lighting	Yes
240 Volt Landline	Yes
Inverter	Mastervolt
Generator	-
Batteries	3 domestic, 1 starter
Additional Systems	Solar panels

Bathroom Specification

Type Of Toilet	Cassette
Bath Fitted	-
Separate Shower Fitted	Yes
Vanity Basin Fitted	Yes
Additional Systems	-

Kitchen Specification

Make & Model Of Cooker	Stoves Newhome 500 DIT
Separate Hob	-
Microwave Fitted	-
Make & Model Of Fridge	Yes
Gas, 12 volt or 240 volt	-
Additional Systems	-

Fit Out Materials

Insulation Used

Types Of Wood Used

Window Types

Materials Used

Bulls Eye, Pigeon Box or Houdini Hatch

Exterior Doors

Side Hatches

Front & Back Covers

Sprayfoam

Ash, Oak & Sapele

Hopper and porthole

Aluminium

-

Front - Steel, Back - Steel

-

-

History Of Vessel

Boat Safety Certificate

Last Hull Blacking

Anodes

Further Maintenance

Recent Survey

Additional Information

RCD/RCR Compliant?

Further Information

January 2029

2023

-

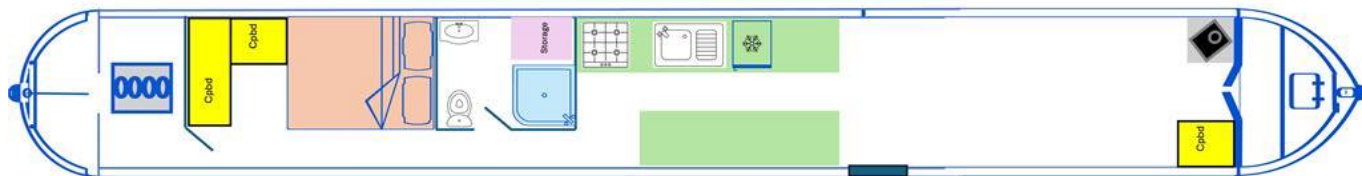
-

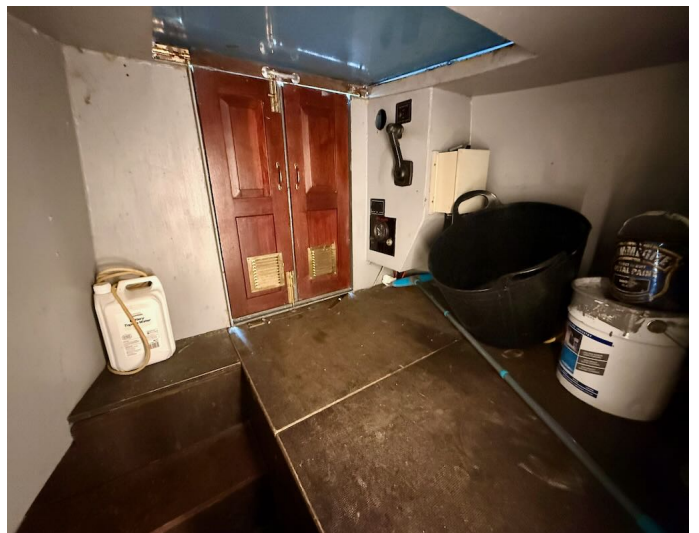
March 2023

-

No

-





Whilton Locks, Near Daventry,
Northants, NN11 2NH
01327 842577
sales@whiltonmarina.co.uk
www.whiltonmarina.co.uk

**For further information please see
a member of the sales team.**

It is the responsibility of the buyer to ensure that all particulars given in the course of the purchase of the boat are accurate. Such particulars are intended only as a guide and do not constitute a term of any contract.

