



## 57ft, Viking Canal Boats, 2016, Cruiser Style



**BERTHS:**

4



**TOILET:**

Dometic cassette



**HEATING:**

Eberspacher



**SURVEY:**

-



**B.S.C:**

Expires October  
2024



**BLACKING:**

2016



**ENGINE:**

Beta 43



**LAYOUT:**

Reverse

**Whilton  
marina**

Whilton Locks, Near Daventry,  
Northants, NN11 2NH

01327 842577

[sales@whiltonmarina.co.uk](mailto:sales@whiltonmarina.co.uk)

[www.whiltonmarina.co.uk](http://www.whiltonmarina.co.uk)

**For further information please see  
a member of the sales team.**

It is the responsibility of the buyer to ensure that all particulars given in the course of the purchase of the boat are accurate. Such particulars are intended only as a guide and do not constitute a term of any contract.



## Boat Specification

|                        |                    |
|------------------------|--------------------|
| Plating Specification  | 10/6/5/4           |
| Flat, V-Hull or Keeled | Flat Hull          |
| Fitted out By          | Viking Canal Boats |
| Fixed Berths           | Cross double       |
| Additional Berths      | Dinette            |

## Engine Specification

|                           |             |
|---------------------------|-------------|
| Engine Make               | Beta 43     |
| No. Of Cylinders          | 4           |
| Keel, Water or Air Cooled | Keel Cooled |
| Gearbox Make              | Prm 150     |
| Aqua Drive                | No          |
| Bow Thruster              | Yes         |
| Diesel Tank Capacity      | 35 gallons  |

## Hot Water & Heating Systems

|                     |                         |
|---------------------|-------------------------|
| Source of Hot Water | Eberspacher & immersion |
| Central Heating     | Eberspacher             |
| Solid Fuel Stove    | Yes                     |
| Water Tank Capacity | 150 gallons             |
| Material used       | Integral                |
| Additional Systems  | -                       |

## Electrical System & Components

|                    |                          |
|--------------------|--------------------------|
| 12 Volt Lighting   | Yes                      |
| 240 Volt Landline  | Yes                      |
| Inverter           | Victron Phoenix 3000watt |
| Generator          | -                        |
| Batteries          | 4 domestic 1 starter     |
| Additional Systems | -                        |

## Bathroom Specification

|                        |                  |
|------------------------|------------------|
| Type Of Toilet         | Dometic cassette |
| Bath Fitted            | No               |
| Separate Shower Fitted | Yes              |
| Vanity Basin Fitted    | Yes              |
| Additional Systems     | -                |

## Kitchen Specification

|                          |                      |
|--------------------------|----------------------|
| Make & Model Of Cooker   | Belling              |
| Separate Hob             | Thetford             |
| Microwave Fitted         | Yes                  |
| Make & Model Of Fridge   | Shoreline            |
| Gas, 12 volt or 240 volt | 12 volt              |
| Additional Systems       | Beko Washing Machine |

## Fit Out Materials

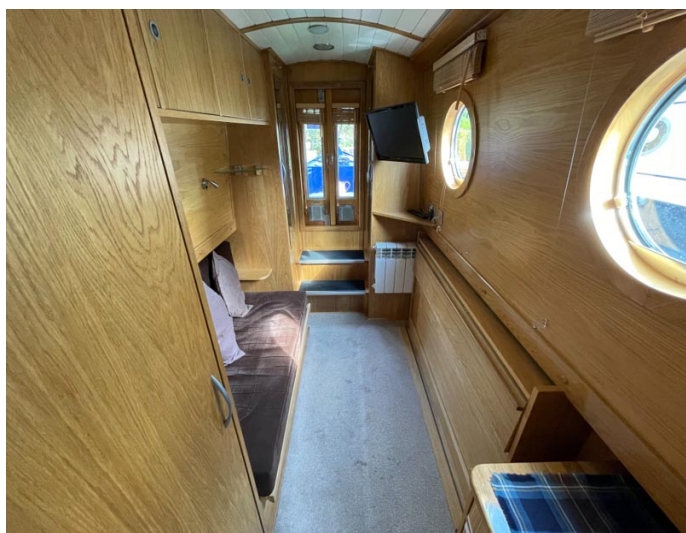
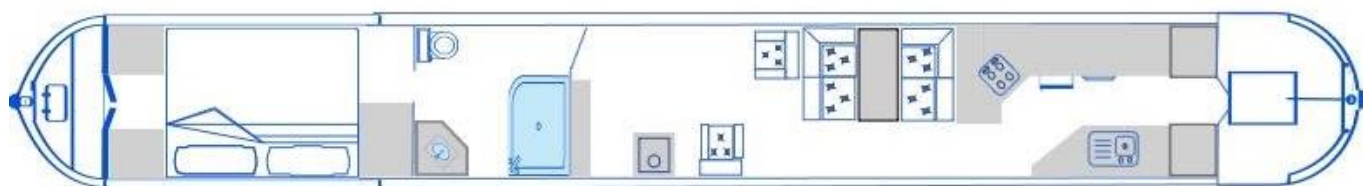
Insulation Used  
Types Of Wood Used  
Window Types  
Materials Used  
Bulls Eye, Pigeon Box or Houdini Hatch  
Exterior Doors  
Side Hatches  
Front & Back Covers

Spray Foam  
Oak  
Drop back  
Aluminium  
-  
Front - Steel, Back - Steel  
Yes  
Back pram cover

## History Of Vessel

Boat Safety Certificate  
Last Hull Blacking  
Anodes  
Further Maintenance  
Recent Survey  
Additional Information

Expires October 2024  
2016  
New 2016  
-  
-  
-







Whilton Locks, Near Daventry,  
Northants, NN11 2NH  
01327 842577  
sales@whiltonmarina.co.uk  
www.whiltonmarina.co.uk

**For further information please see  
a member of the sales team.**

It is the responsibility of the buyer to ensure that all particulars given in the course of the purchase of the boat are accurate. Such particulars are intended only as a guide and do not constitute a term of any contract.