



47ft, Lockhart Marine, 1993, Cruiser Style



BERTHS:

Four



TOILET:

Mansfield Traveller



HEATING:

Eberspacher
Blower



SURVEY:

-



B.S.C:

Expires January
2022



BLACKING:

2015



ENGINE:

Nanni Diesel



LAYOUT:

Standard

Whilton
marina

Whilton Locks, Near Daventry,
Northants, NN11 2NH

01327 842577

sales@whiltonmarina.co.uk

www.whiltonmarina.co.uk

**For further information please see
a member of the sales team.**

It is the responsibility of the buyer to ensure that all particulars given in the course of the purchase of the boat are accurate. Such particulars are intended only as a guide and do not constitute a term of any contract.



Boat Specification

Plating Specification
Flat, V-Hull or Keeled
Fitted out By
Fixed Berths
Additional Berths

10/6/4mm
Flat Hull
Shotbolt Engineering
2 x Single bunks + 1 single
Convertible Dinette

Engine Specification

Engine Make
No. Of Cylinders
Keel, Water or Air Cooled
Gearbox Make
Aqua Drive
Bow Thruster
Diesel Tank Capacity

Nanni Diesel
Three
Keel Cooled
HBW 50
-
No
40 Gallons

Hot Water & Heating Systems

Source of Hot Water
Central Heating
Solid Fuel Stove
Water Tank Capacity
Material used
Additional Systems

Paloma
Eberspacher Blower
-
120 Gallons
Integral
-

Electrical System & Components

12 Volt Lighting
240 Volt Landline
Inverter
Generator
Batteries
Additional Systems

Yes
No
-
-
Two Domestic and One Starter
-

Bathroom Specification

Type Of Toilet
Bath Fitted
Separate Shower Fitted
Vanity Basin Fitted
Additional Systems

Mansfield Traveller
-
Yes
No
-

Kitchen Specification

Make & Model Of Cooker
Separate Hob
Microwave Fitted
Make & Model Of Fridge
Gas, 12 volt or 240 volt
Additional Systems

Vanette GG7000
Vanette 4000/2
-
LEC
12 Volt
-

Fit Out Materials

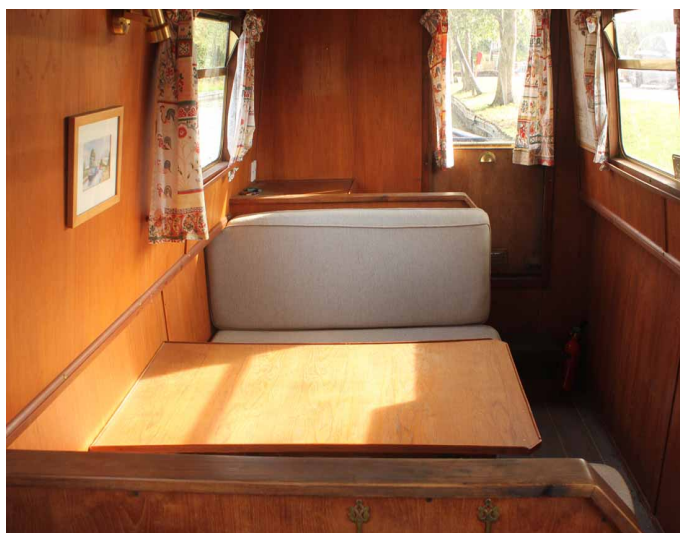
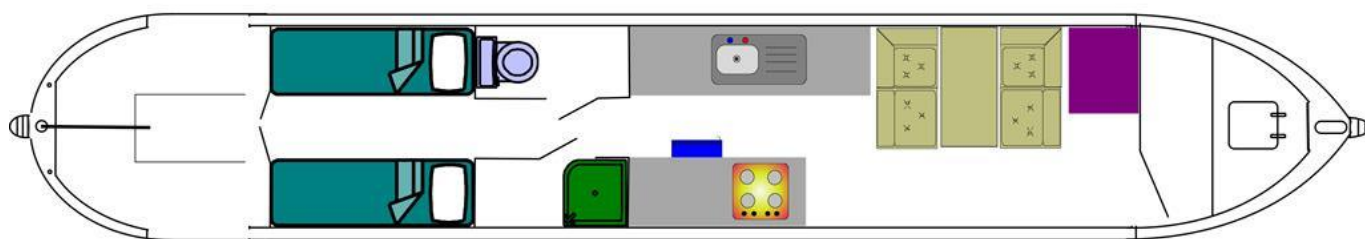
Insulation Used
Types Of Wood Used
Window Types
Materials Used
Bulls Eye, Pigeon Box or Houdini Hatch
Exterior Doors
Side Hatches
Front & Back Covers

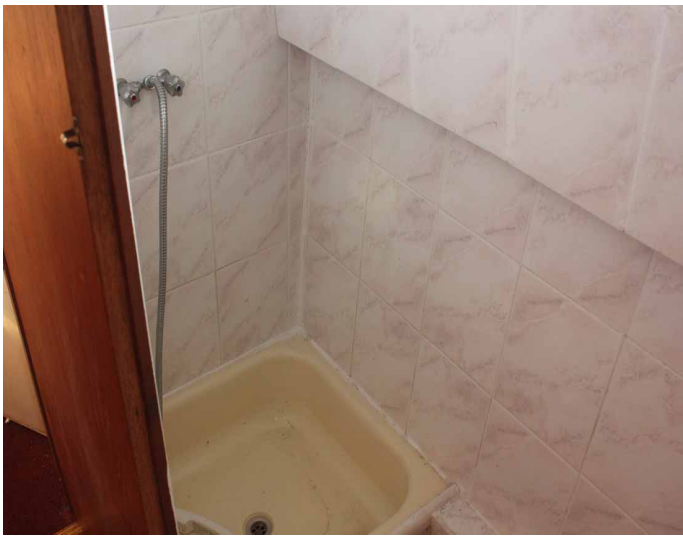
Rockwool
Oak
Hopper
Gold Anodised
-
-
-
-

History Of Vessel

Boat Safety Certificate
Last Hull Blacking
Anodes
Further Maintenance
Recent Survey
Additional Information

Expires January 2022
2015
Replaced 2015
-
-
-





Whilton Locks, Near Daventry,
Northants, NN11 2NH
01327 842577
sales@whiltonmarina.co.uk
www.whiltonmarina.co.uk

**For further information please see
a member of the sales team.**

It is the responsibility of the buyer to ensure that all particulars given in the course of the purchase of the boat are accurate. Such particulars are intended only as a guide and do not constitute a term of any contract.