



Shell ready for internal fit out

57ft, Lymm Boatbuilders, 2020, Cruiser Style



BERTHS:



TOILET:

-



HEATING:

Webasto



SURVEY:

-



B.S.C:

May 2026



BLACKING:

March 2023



ENGINE:

Beta 38



LAYOUT:

Reverse

**Whilton**  
marina

Whilton Locks, Near Daventry,  
Northants, NN11 2NH

01327 842577

[sales@whiltonmarina.co.uk](mailto:sales@whiltonmarina.co.uk)

[www.whiltonmarina.co.uk](http://www.whiltonmarina.co.uk)

**For further information please see  
a member of the sales team.**

It is the responsibility of the buyer to ensure that all particulars given in the course of the purchase of the boat are accurate. Such particulars are intended only as a guide and do not constitute a term of any contract.



## Boat Specification

Plating Specification	10/6/5/4
Flat, V-Hull or Keeled	Flat Hull
Fitted out By	Owner
Fixed Berths	-
Additional Berths	-

## Engine Specification

Engine Make	Beta 38
No. Of Cylinders	4
Keel, Water or Air Cooled	Keel Cooled
Gearbox Make	PRM 150
Aqua Drive	No
Bow Thruster	No
Diesel Tank Capacity	180 litres approx

## Hot Water & Heating Systems

Source of Hot Water	Webasto, calorifier, engine
Central Heating	Webasto
Solid Fuel Stove	-
Water Tank Capacity	315 litres approx
Material used	Stainless steel
Additional Systems	-

## Electrical System & Components

12 Volt Lighting	Yes
240 Volt Landline	Yes
Inverter	-
Generator	-
Batteries	3 domestic, 1 starter
Additional Systems	-

## Bathroom Specification

Type Of Toilet	-
Bath Fitted	-
Separate Shower Fitted	-
Vanity Basin Fitted	-
Additional Systems	-

## Kitchen Specification

Make & Model Of Cooker	-
Separate Hob	-
Microwave Fitted	-
Make & Model Of Fridge	-
Gas, 12 volt or 240 volt	-
Additional Systems	-

## Fit Out Materials

Insulation Used  
Types Of Wood Used  
Window Types  
Materials Used  
Bulls Eye, Pigeon Box or Houdini Hatch  
Exterior Doors  
Side Hatches  
Front & Back Covers

Spray Foam  
T&G  
Thermal double glazed hopper  
Aluminium  
-  
Front - Wood, Back - Steel  
Yes  
-

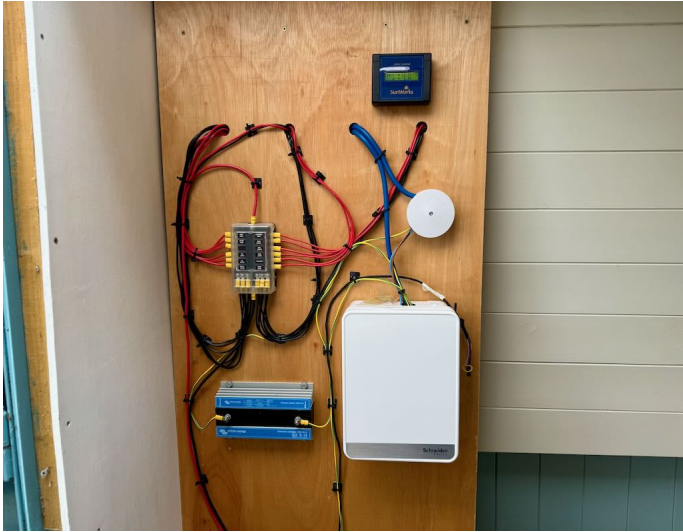
## History Of Vessel

Boat Safety Certificate  
Last Hull Blacking  
Anodes  
Further Maintenance  
Recent Survey  
Additional Information  
RCD/RCR Compliant?  
Further Information

May 2026  
March 2023  
Checked March 2023  
-  
-  
Shell ready for internal fit out  
Yes  
PCA completed November 2025







Whilton Locks, Near Daventry,  
Northants, NN11 2NH  
01327 842577  
sales@whiltonmarina.co.uk  
www.whiltonmarina.co.uk

**For further information please see  
a member of the sales team.**

It is the responsibility of the buyer to ensure that all particulars given in the course of the purchase of the boat are accurate. Such particulars are intended only as a guide and do not constitute a term of any contract.

