



58ft, Liverpool, 2003, Semi-Traditional Style



BERTHS:

6



TOILET:

Thetford cassette



HEATING:

-



SURVEY:

september 2020



B.S.C:

New with sale



BLACKING:

2020 September



ENGINE:

Isuzu 35



LAYOUT:

Standard

**Whilton
marina**

Whilton Locks, Near Daventry,
Northants, NN11 2NH

01327 842577

sales@whiltonmarina.co.uk

www.whiltonmarina.co.uk

**For further information please see
a member of the sales team.**

It is the responsibility of the buyer to ensure that all particulars given in the course of the purchase of the boat are accurate. Such particulars are intended only as a guide and do not constitute a term of any contract.



Boat Specification

Plating Specification	10/6/4
Flat, V-Hull or Keeled	Flat Hull
Fitted out By	Owner
Fixed Berths	Fixed double
Additional Berths	2 pullout double

Engine Specification

Engine Make	Isuzu 35
No. Of Cylinders	4
Keel, Water or Air Cooled	Keel Cooled
Gearbox Make	Prm 120
Aqua Drive	No
Bow Thruster	No
Diesel Tank Capacity	35 gallons

Hot Water & Heating Systems

Source of Hot Water	Immersion
Central Heating	-
Solid Fuel Stove	Yes
Water Tank Capacity	150 gallons
Material used	Integral
Additional Systems	-

Electrical System & Components

12 Volt Lighting	Yes
240 Volt Landline	Yes
Inverter	Victron Phoenix 3000watt
Generator	-
Batteries	3 domestic 1 starter
Additional Systems	-

Bathroom Specification

Type Of Toilet	Thetford cassette
Bath Fitted	No
Separate Shower Fitted	Yes
Vanity Basin Fitted	Yes
Additional Systems	-

Kitchen Specification

Make & Model Of Cooker	Yes
Separate Hob	No
Microwave Fitted	-
Make & Model Of Fridge	Montpellier
Gas, 12 volt or 240 volt	12 volt
Additional Systems	-

Fit Out Materials

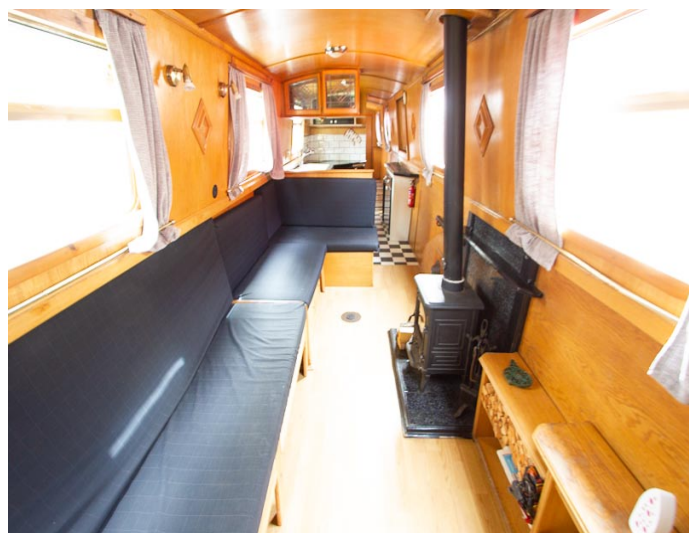
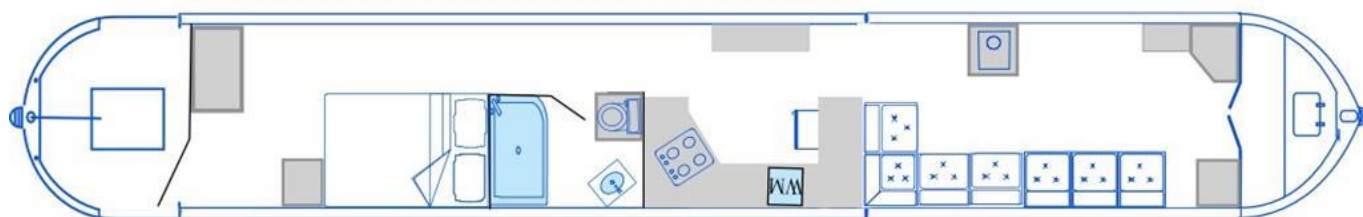
Insulation Used
Types Of Wood Used
Window Types
Materials Used
Bulls Eye, Pigeon Box or Houdini Hatch
Exterior Doors
Side Hatches
Front & Back Covers

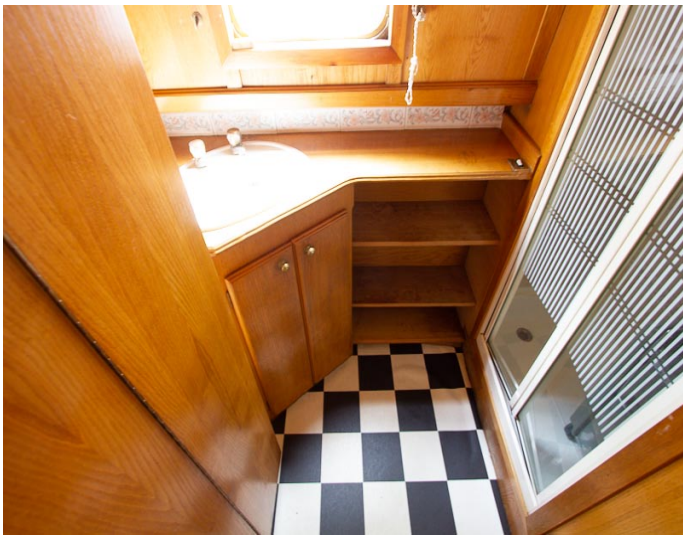
Spray Foam
Oak
Hopper
Gold Anodised
-
Front - Wood, Back - Wood
Yes
No

History Of Vessel

Boat Safety Certificate
Last Hull Blacking
Anodes
Further Maintenance
Recent Survey
Additional Information

New with sale
2020 September
Checked September 2020
-
september 2020
-





Whilton Locks, Near Daventry,
Northants, NN11 2NH
01327 842577
sales@whiltonmarina.co.uk
www.whiltonmarina.co.uk

**For further information please see
a member of the sales team.**

It is the responsibility of the buyer to ensure that all particulars given in the course of the purchase of the boat are accurate. Such particulars are intended only as a guide and do not constitute a term of any contract.