



47ft, R&D, 1985, Traditional Style



**BERTHS:**

4



**TOILET:**

Thetford Cassette



**HEATING:**

-



**SURVEY:**

-



**B.S.C:**

New with sale



**BLACKING:**

2021



**ENGINE:**

Lister HRW3



**LAYOUT:**

-

**Whilton**  
marina

Whilton Locks, Near Daventry,  
Northants, NN11 2NH

01327 842577

[sales@whiltonmarina.co.uk](mailto:sales@whiltonmarina.co.uk)

[www.whiltonmarina.co.uk](http://www.whiltonmarina.co.uk)

**For further information please see  
a member of the sales team.**

It is the responsibility of the buyer to ensure that all particulars given in the course of the purchase of the boat are accurate. Such particulars are intended only as a guide and do not constitute a term of any contract.



## Boat Specification

Plating Specification	6/6/4
Flat, V-Hull or Keeled	Flat Hull
Fitted out By	Owner
Fixed Berths	-
Additional Berths	Boatmans cabin & double under front deck

## Engine Specification

Engine Make	Lister HRW3
No. Of Cylinders	3
Keel, Water or Air Cooled	Raw Water Cooled
Gearbox Make	Lister Blackstones
Aqua Drive	No
Bow Thruster	No
Diesel Tank Capacity	30 gallons

## Hot Water & Heating Systems

Source of Hot Water	Morco
Central Heating	-
Solid Fuel Stove	Yes x2
Water Tank Capacity	120 gallons
Material used	Integral
Additional Systems	-

## Electrical System & Components

12 Volt Lighting	Yes
240 Volt Landline	No
Inverter	Yes
Generator	-
Batteries	3 domestic 1 starter
Additional Systems	-

## Bathroom Specification

Type Of Toilet	Thetford Cassette
Bath Fitted	No
Separate Shower Fitted	Yes
Vanity Basin Fitted	Yes
Additional Systems	-

## Kitchen Specification

Make & Model Of Cooker	Valor
Separate Hob	-
Microwave Fitted	-
Make & Model Of Fridge	Cordoba Leisure
Gas, 12 volt or 240 volt	12 volt / Gas
Additional Systems	-

## Fit Out Materials

Insulation Used  
Types Of Wood Used  
Window Types  
Materials Used  
Bulls Eye, Pigeon Box or Houdini Hatch  
Exterior Doors  
Side Hatches  
Front & Back Covers

Polystyrene  
Oak T&G  
Porthole  
Brass  
-  
Front - Steel, Back - Steel  
Yes  
-

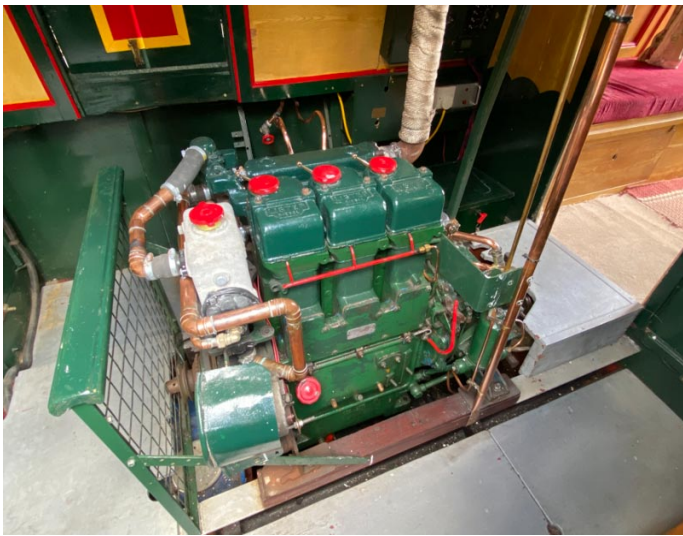
## History Of Vessel

Boat Safety Certificate  
Last Hull Blacking  
Anodes  
Further Maintenance  
Recent Survey  
Additional Information

New with sale  
2021  
-  
-  
-  
-







Whilton Locks, Near Daventry,  
Northants, NN11 2NH  
01327 842577  
sales@whiltonmarina.co.uk  
www.whiltonmarina.co.uk

**For further information please see  
a member of the sales team.**

It is the responsibility of the buyer to ensure that all particulars given in the course of the purchase of the boat are accurate. Such particulars are intended only as a guide and do not constitute a term of any contract.

