



## 40ft, Dartline, 1984, Cruiser Style



### BERTHS:

Three



### TOILET:

Thetford Cassette



### HEATING:

-



### SURVEY:

June 2018



### B.S.C:

January 2022



### BLACKING:

August 2018



### ENGINE:

Lister ST3



### LAYOUT:

Reverse

**Whilton**  
marina

Whilton Locks, Near Daventry,  
Northants, NN11 2NH

01327 842577

[sales@whiltonmarina.co.uk](mailto:sales@whiltonmarina.co.uk)

[www.whiltonmarina.co.uk](http://www.whiltonmarina.co.uk)

**For further information please see  
a member of the sales team.**

It is the responsibility of the buyer to ensure that all particulars given in the course of the purchase of the boat are accurate. Such particulars are intended only as a guide and do not constitute a term of any contract.



## Boat Specification

Plating Specification  
Flat, V-Hull or Keeled  
Fitted out By  
Fixed Berths  
Additional Berths

6/5/3mm (overplated 2006)  
Flat Hull  
Anglo Welsh  
-  
Three Make Up Singles

## Engine Specification

Engine Make  
No. Of Cylinders  
Keel, Water or Air Cooled  
Gearbox Make  
Aqua Drive  
Bow Thruster  
Diesel Tank Capacity

Lister ST3  
Three  
Air Cooled  
Lister Blackstone  
-  
No  
40 gallons

## Hot Water & Heating Systems

Source of Hot Water  
Central Heating  
Solid Fuel Stove  
Water Tank Capacity  
Material used  
Additional Systems

Morco  
-  
Stovax  
100 gallons  
Integral steel  
-

## Electrical System & Components

12 Volt Lighting  
240 Volt Landline  
Inverter  
Generator  
Batteries  
Additional Systems

Yes  
Yes  
-  
-  
2 domestic & 1 starter  
-

## Bathroom Specification

Type Of Toilet  
Bath Fitted  
Separate Shower Fitted  
Vanity Basin Fitted  
Additional Systems

Thetford Cassette  
-  
Yes  
Yes  
-

## Kitchen Specification

Make & Model Of Cooker  
Separate Hob  
Microwave Fitted  
Make & Model Of Fridge  
Gas, 12 volt or 240 volt  
Additional Systems

Thetford Caprice  
-  
-  
Fridgedaire  
12 volt  
-

## Fit Out Materials

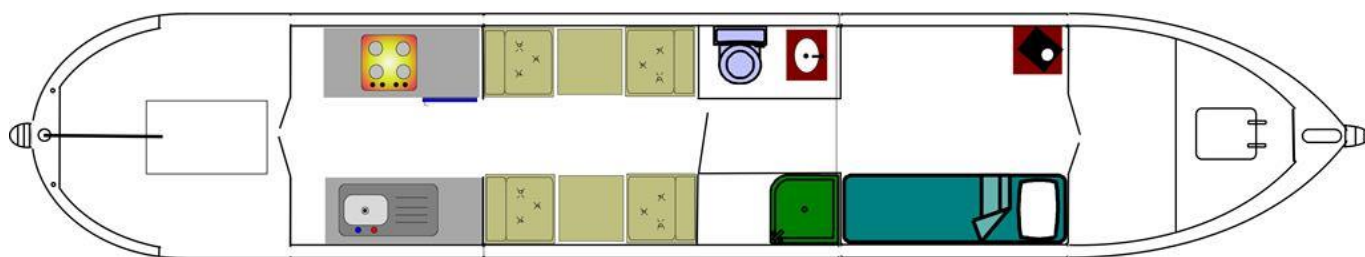
Insulation Used  
Types Of Wood Used  
Window Types  
Materials Used  
Bulls Eye, Pigeon Box or Houdini Hatch  
Exterior Doors  
Side Hatches  
Front & Back Covers

Polystyrene  
Pine t&g  
Hopper  
Aluminium  
-  
-  
-  
Front & rear covers

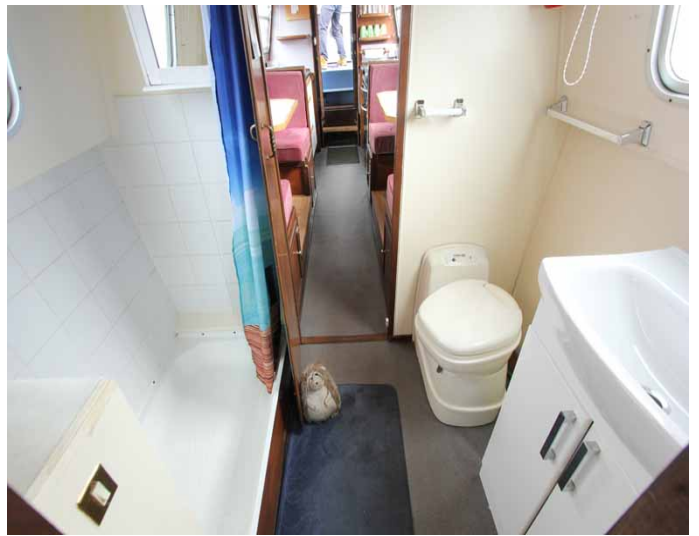
## History Of Vessel

Boat Safety Certificate  
Last Hull Blacking  
Anodes  
Further Maintenance  
Recent Survey  
Additional Information

January 2022  
August 2018  
Checked August 2018  
-  
June 2018  
-







Whilton Locks, Near Daventry,  
Northants, NN11 2NH  
01327 842577  
sales@whiltonmarina.co.uk  
www.whiltonmarina.co.uk

**For further information please see  
a member of the sales team.**

It is the responsibility of the buyer to ensure that all particulars given in the course of the purchase of the boat are accurate. Such particulars are intended only as a guide and do not constitute a term of any contract.

