



## 55ft, Pat Buckle, 1993, Traditional Style



### BERTHS:

Two



### TOILET:

Cassette



### HEATING:

-



### SURVEY:

-



### B.S.C:

-



### BLACKING:

2019



### ENGINE:

Tempo Matadar



### LAYOUT:

Standard

**Whilton**  
marina

Whilton Locks, Near Daventry,  
Northants, NN11 2NH

01327 842577

[sales@whiltonmarina.co.uk](mailto:sales@whiltonmarina.co.uk)

[www.whiltonmarina.co.uk](http://www.whiltonmarina.co.uk)

**For further information please see  
a member of the sales team.**

It is the responsibility of the buyer to ensure that all particulars given in the course of the purchase of the boat are accurate. Such particulars are intended only as a guide and do not constitute a term of any contract.



## Boat Specification

Plating Specification  
Flat, V-Hull or Keeled  
Fitted out By  
Fixed Berths  
Additional Berths

8/6/4  
Flat Hull  
Professional  
-  
Convertible double & convertible dinette

## Engine Specification

Engine Make  
No. Of Cylinders  
Keel, Water or Air Cooled  
Gearbox Make  
Aqua Drive  
Bow Thruster  
Diesel Tank Capacity

Tempo Matadar  
Four  
Keel Cooled  
-  
-  
No  
-

## Hot Water & Heating Systems

Source of Hot Water  
Central Heating  
Solid Fuel Stove  
Water Tank Capacity  
Material used  
Additional Systems

Gas calorifier  
-  
Morso  
150 gallons  
Integral  
-

## Electrical System & Components

12 Volt Lighting  
240 Volt Landline  
Inverter  
Generator  
Batteries  
Additional Systems

Yes  
Yes  
Victron  
-  
Three Domestic & One Starter  
-

## Bathroom Specification

Type Of Toilet  
Bath Fitted  
Separate Shower Fitted  
Vanity Basin Fitted  
Additional Systems

Cassette  
-  
Yes  
Yes  
-

## Kitchen Specification

Make & Model Of Cooker  
Separate Hob  
Microwave Fitted  
Make & Model Of Fridge  
Gas, 12 volt or 240 volt  
Additional Systems

Belling  
Ikea  
-  
Isotherm  
-  
-

## Fit Out Materials

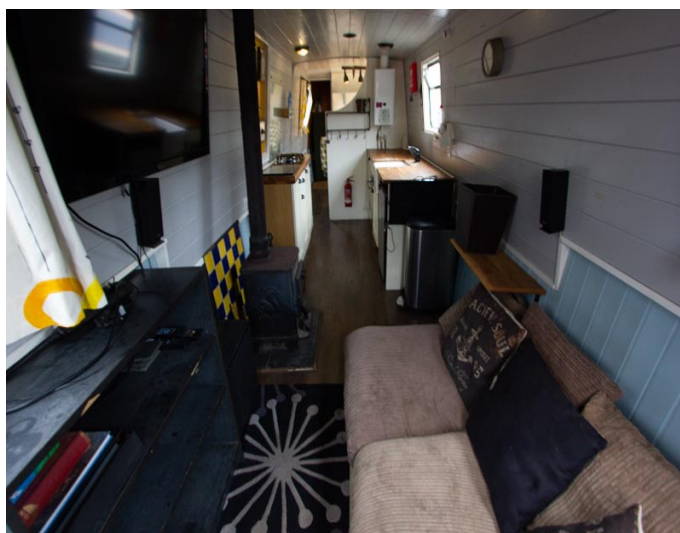
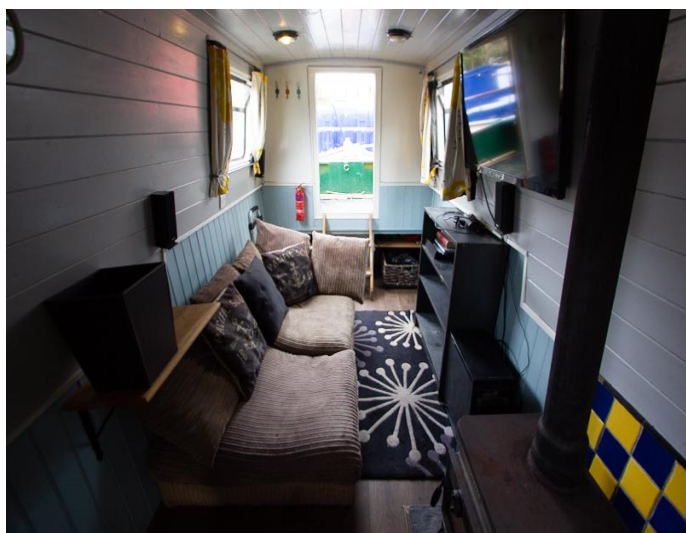
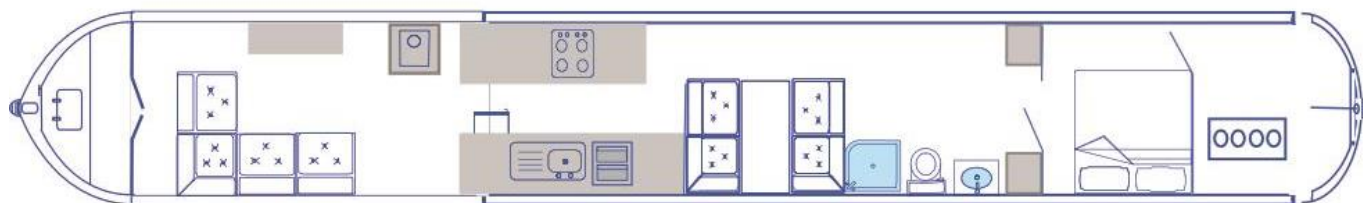
Insulation Used  
Types Of Wood Used  
Window Types  
Materials Used  
Bulls Eye, Pigeon Box or Houdini Hatch  
Exterior Doors  
Side Hatches  
Front & Back Covers

Polystyrene  
Pine T&G  
Hopper  
Aluminium  
-  
Front - Steel , Back - Steel  
Yes  
-

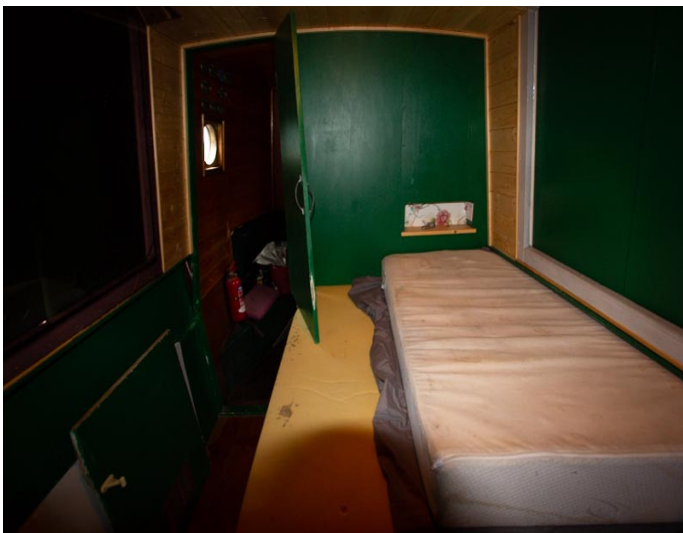
## History Of Vessel

Boat Safety Certificate  
Last Hull Blacking  
Anodes  
Further Maintenance  
Recent Survey  
Additional Information

-  
2019  
2019  
Water heater replaced.  
-  
-







Whilton Locks, Near Daventry,  
Northants, NN11 2NH  
01327 842577  
sales@whiltonmarina.co.uk  
www.whiltonmarina.co.uk

**For further information please see  
a member of the sales team.**

It is the responsibility of the buyer to ensure that all particulars given in the course of the purchase of the boat are accurate. Such particulars are intended only as a guide and do not constitute a term of any contract.

