



## Butty for the motor Ultima

57ft, Doug Moore, 1995, Traditional Style



**BERTHS:**

3



**TOILET:**

Porta potti style



**HEATING:**

Wifi controlled  
panel radiator, hot  
water radiator



**SURVEY:**

-



**B.S.C:**

November 2024



**BLACKING:**

November 2021



**ENGINE:**

Beta Kubota



**LAYOUT:**

Standard

**Whilton  
marina**

Whilton Locks, Near Daventry,  
Northants, NN11 2NH

01327 842577

[sales@whiltonmarina.co.uk](mailto:sales@whiltonmarina.co.uk)

[www.whiltonmarina.co.uk](http://www.whiltonmarina.co.uk)

**For further information please see  
a member of the sales team.**

It is the responsibility of the buyer to ensure that all particulars given in the course of the purchase of the boat are accurate. Such particulars are intended only as a guide and do not constitute a term of any contract.



## Boat Specification

Plating Specification  
Flat, V-Hull or Keeled  
Fitted out By  
Fixed Berths  
Additional Berths

10/6/4  
Flat Hull  
Ken Nelson  
Single + Fold down double in back cabin  
-

## Engine Specification

Engine Make  
No. Of Cylinders  
Keel, Water or Air Cooled  
Gearbox Make  
Aqua Drive  
Bow Thruster  
Diesel Tank Capacity

Beta Kubota  
4  
Raw Water Cooled  
Prm Delta 20  
No  
No  
75 gallons approx

## Hot Water & Heating Systems

Source of Hot Water  
Central Heating  
Solid Fuel Stove  
Water Tank Capacity  
Material used  
Additional Systems

Engine, back boiler, immersion  
Wifi controlled panel radiator, hot water radiator  
Epping  
100 gallons approx  
Stainless steel  
Solar panels

## Electrical System & Components

12 Volt Lighting  
240 Volt Landline  
Inverter  
Generator  
Batteries  
Additional Systems

Yes (plus 240v lighting)  
Yes  
Victron Multiplus 3KVA/120A/12v  
Mecc-Alte EC28  
2 domestic (Li), 1 starter  
solar panels + MPPT controller

## Bathroom Specification

Type Of Toilet  
Bath Fitted  
Separate Shower Fitted  
Vanity Basin Fitted  
Additional Systems

Porta potti style  
-  
Yes  
Yes  
-

## Kitchen Specification

Make & Model Of Cooker  
Separate Hob  
Microwave Fitted  
Make & Model Of Fridge  
Gas, 12 volt or 240 volt  
Additional Systems

Tricity  
-  
-  
-  
-  
240v washing machine and tumble drier

## Fit Out Materials

Insulation Used

Types Of Wood Used

Window Types

Materials Used

Bulls Eye, Pigeon Box or Houdini Hatch

Exterior Doors

Side Hatches

Front & Back Covers

Rockwool

Ply

-

-

-

Front - Wood, Back - Steel

Yes

-

## History Of Vessel

Boat Safety Certificate

Last Hull Blacking

Anodes

Further Maintenance

Recent Survey

Additional Information

November 2024

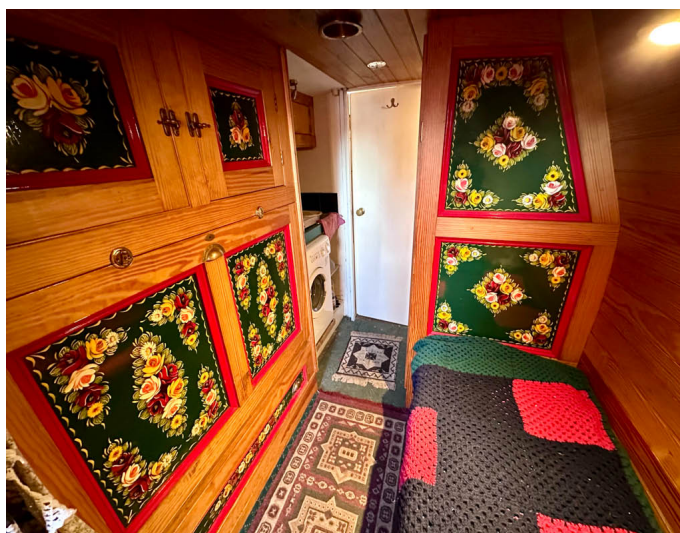
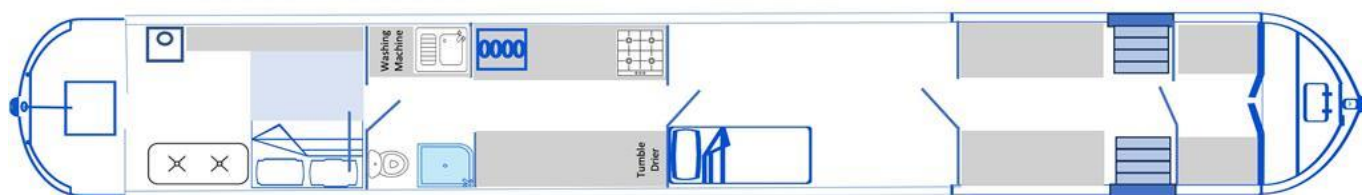
November 2021

November 2021

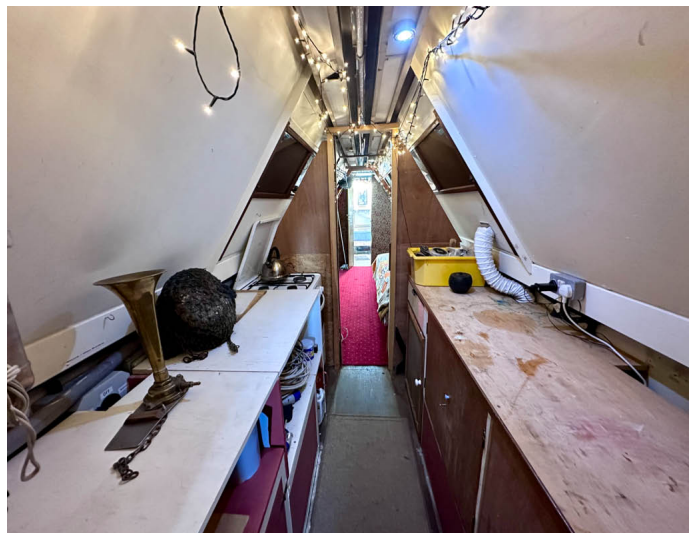
Gas locker floor repaired

-

Butty for the motor Ultima







Whilton Locks, Near Daventry,  
Northants, NN11 2NH  
01327 842577  
sales@whiltonmarina.co.uk  
www.whiltonmarina.co.uk

**For further information please see  
a member of the sales team.**

It is the responsibility of the buyer to ensure that all particulars given in the course of the purchase of the boat are accurate. Such particulars are intended only as a guide and do not constitute a term of any contract.

