



Butty for the motor Ultima

57ft, Doug Moore, 1995, Traditional Style



BERTHS:

3



TOILET:

Porta potti style



HEATING:

Wifi controlled
panel radiator, hot
water radiator



SURVEY:

-



B.S.C:

November 2024



BLACKING:

November 2021



ENGINE:

Beta Kubota



LAYOUT:

Standard

**Whilton
marina**

Whilton Locks, Near Daventry,
Northants, NN11 2NH

01327 842577

sales@whiltonmarina.co.uk

www.whiltonmarina.co.uk

**For further information please see
a member of the sales team.**

It is the responsibility of the buyer to ensure that all particulars given in the course of the purchase of the boat are accurate. Such particulars are intended only as a guide and do not constitute a term of any contract.



Boat Specification

Plating Specification
Flat, V-Hull or Keeled
Fitted out By
Fixed Berths
Additional Berths

10/6/4
Flat Hull
Ken Nelson
Single + Fold down double in back cabin
-

Engine Specification

Engine Make
No. Of Cylinders
Keel, Water or Air Cooled
Gearbox Make
Aqua Drive
Bow Thruster
Diesel Tank Capacity

Beta Kubota
4
Raw Water Cooled
Prm Delta 20
No
No
75 gallons approx

Hot Water & Heating Systems

Source of Hot Water
Central Heating
Solid Fuel Stove
Water Tank Capacity
Material used
Additional Systems

Engine, back boiler, immersion
Wifi controlled panel radiator, hot water radiator
Epping
100 gallons approx
Stainless steel
Solar panels

Electrical System & Components

12 Volt Lighting
240 Volt Landline
Inverter
Generator
Batteries
Additional Systems

Yes (plus 240v lighting)
Yes
Victron Multiplus 3KVA/120A/12v
Mecc-Alte EC28
2 domestic (Li), 1 starter
solar panels + MPPT controller

Bathroom Specification

Type Of Toilet
Bath Fitted
Separate Shower Fitted
Vanity Basin Fitted
Additional Systems

Porta potti style
-
Yes
Yes
-

Kitchen Specification

Make & Model Of Cooker
Separate Hob
Microwave Fitted
Make & Model Of Fridge
Gas, 12 volt or 240 volt
Additional Systems

Tricity
-
-
-
-
240v washing machine and tumble drier

Fit Out Materials

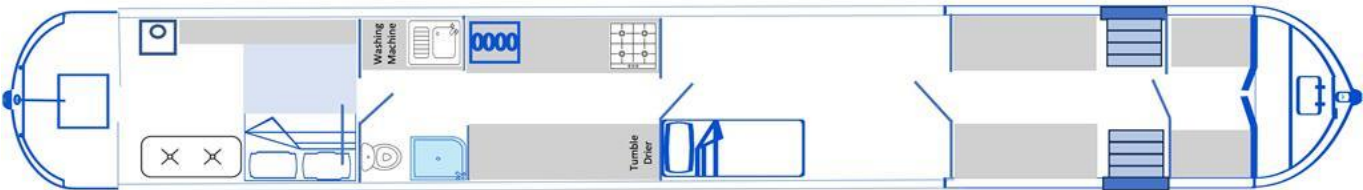
- Insulation Used
- Types Of Wood Used
- Window Types
- Materials Used
- Bulls Eye, Pigeon Box or Houdini Hatch
- Exterior Doors
- Side Hatches
- Front & Back Covers

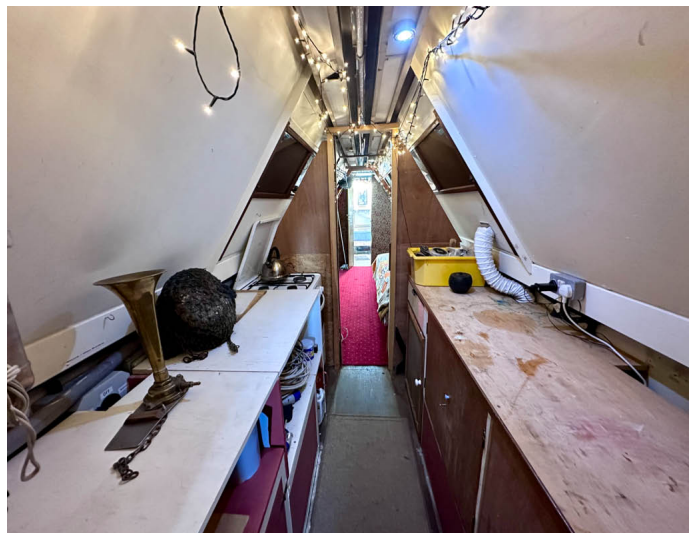
- Rockwool
- Ply
-
-
-
- Front - Wood, Back - Steel
- Yes
-

History Of Vessel

- Boat Safety Certificate
- Last Hull Blacking
- Anodes
- Further Maintenance
- Recent Survey
- Additional Information

- November 2024
- November 2021
- November 2021
- Gas locker floor repaired
-
- Butty for the motor Ultima





Whilton Locks, Near Daventry,
Northants, NN11 2NH
01327 842577
sales@whiltonmarina.co.uk
www.whiltonmarina.co.uk

**For further information please see
a member of the sales team.**

It is the responsibility of the buyer to ensure that all particulars given in the course of the purchase of the boat are accurate. Such particulars are intended only as a guide and do not constitute a term of any contract.

