

UNDER OFFER

62ft, Colecraft, 2003, Traditional Style



BERTHS:

4



TOILET:

Pumpout



HEATING:

-



SURVEY:

Feb 2023



B.S.C:

January 2027



BLACKING:

August 2023



ENGINE:

Beta 43



LAYOUT:

Standard

**Whilton
marina**

Whilton Locks, Near Daventry,
Northants, NN11 2NH

01327 842577

sales@whiltonmarina.co.uk

www.whiltonmarina.co.uk

**For further information please see
a member of the sales team.**

It is the responsibility of the buyer to ensure that all particulars given in the course of the purchase of the boat are accurate. Such particulars are intended only as a guide and do not constitute a term of any contract.



Boat Specification

Plating Specification
Flat, V-Hull or Keeled
Fitted out By
Fixed Berths
Additional Berths

10/6/4
Flat Hull
Owner
Fixed double
Dinette

Engine Specification

Engine Make
No. Of Cylinders
Keel, Water or Air Cooled
Gearbox Make
Aqua Drive
Bow Thruster
Diesel Tank Capacity

Beta 43
4
Keel Cooled
Newage
No
Yes
35 gallons approx

Hot Water & Heating Systems

Source of Hot Water
Central Heating
Solid Fuel Stove
Water Tank Capacity
Material used
Additional Systems

Engine
-
Waterford
150 gallons approx
Integral
-

Electrical System & Components

12 Volt Lighting
240 Volt Landline
Inverter
Generator
Batteries
Additional Systems

Yes
Yes
Victron
Travel power 3.5 Kwatt
6 domestic, 1 starter, 1 bow thruster
2 x 410w super high power solar panels

Bathroom Specification

Type Of Toilet
Bath Fitted
Separate Shower Fitted
Vanity Basin Fitted
Additional Systems

Pumpout
No
Yes
Yes
-

Kitchen Specification

Make & Model Of Cooker
Separate Hob
Microwave Fitted
Make & Model Of Fridge
Gas, 12 volt or 240 volt
Additional Systems

Hotpoint
Hotpoint
-
Hotpoint
240v
Candy washing machine

Fit Out Materials

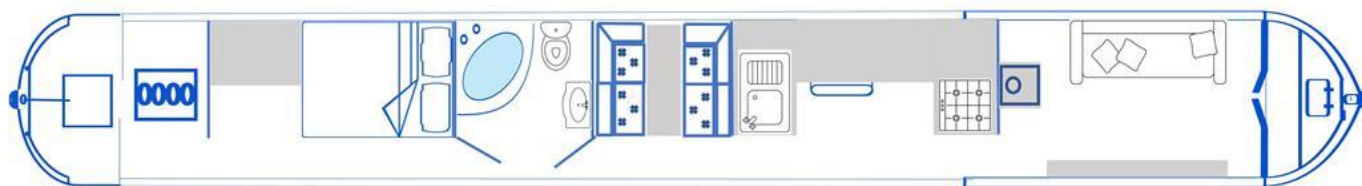
Insulation Used
Types Of Wood Used
Window Types
Materials Used
Bulls Eye, Pigeon Box or Houdini Hatch
Exterior Doors
Side Hatches
Front & Back Covers

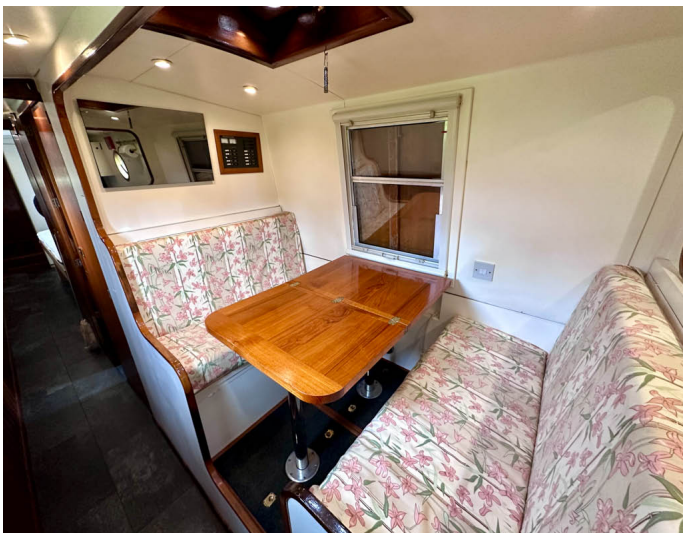
Spray Foam
Painted ply
Porthole
Gold Anodised
Houdini hatch x 2
Front - Steel, Back - Steel
Yes x 3
No

History Of Vessel

Boat Safety Certificate
Last Hull Blacking
Anodes
Further Maintenance
Recent Survey
Additional Information

January 2027
August 2023
Checked Aug 23
-
Feb 2023
-





Whilton Locks, Near Daventry,
Northants, NN11 2NH
01327 842577
sales@whiltonmarina.co.uk
www.whiltonmarina.co.uk

For further information please see
a member of the sales team.

It is the responsibility of the buyer to ensure that all particulars given in the course of the purchase of the boat are accurate. Such particulars are intended only as a guide and do not constitute a term of any contract.

