



## 50ft, Victory, 2016, Cruiser Style



**BERTHS:**

4



**TOILET:**

Simploo compost



**HEATING:**

Diesel heater



**SURVEY:**

March 2022



**B.S.C:**

May 2025



**BLACKING:**

2022



**ENGINE:**

Canaline 42



**LAYOUT:**

Reverse

**Whilton**  
marina

Whilton Locks, Near Daventry,  
Northants, NN11 2NH

01327 842577

[sales@whiltonmarina.co.uk](mailto:sales@whiltonmarina.co.uk)

[www.whiltonmarina.co.uk](http://www.whiltonmarina.co.uk)

**For further information please see  
a member of the sales team.**

It is the responsibility of the buyer to ensure that all particulars given in the course of the purchase of the boat are accurate. Such particulars are intended only as a guide and do not constitute a term of any contract.



## Boat Specification

Plating Specification  
Flat, V-Hull or Keeled  
Fitted out By  
Fixed Berths  
Additional Berths

10/6/4  
Flat Hull  
Owner  
Fixed double  
Sofa bed

## Engine Specification

Engine Make  
No. Of Cylinders  
Keel, Water or Air Cooled  
Gearbox Make  
Aqua Drive  
Bow Thruster  
Diesel Tank Capacity

Canaline 42  
4  
Keel Cooled  
Canaline  
No  
No  
unknown

## Hot Water & Heating Systems

Source of Hot Water  
Central Heating  
Solid Fuel Stove  
Water Tank Capacity  
Material used  
Additional Systems

Engine  
Diesel heater  
Mazona  
400 litres approx  
Stainless steel  
-

## Electrical System & Components

12 Volt Lighting  
240 Volt Landline  
Inverter  
Generator  
Batteries  
Additional Systems

Yes  
Yes  
Victron Multiplus 12/1600/70  
-  
4 domestic, 1 starter  
2 x 325w solar panels, MPPT charger

## Bathroom Specification

Type Of Toilet  
Bath Fitted  
Separate Shower Fitted  
Vanity Basin Fitted  
Additional Systems

Simploo compost  
No  
Yes  
Yes  
-

## Kitchen Specification

Make & Model Of Cooker  
Separate Hob  
Microwave Fitted  
Make & Model Of Fridge  
Gas, 12 volt or 240 volt  
Additional Systems

Haden HSGX gas cooker  
SIA AMZBF30BL  
-  
Yes  
12v  
Beko washer dryer

## Fit Out Materials

Insulation Used

Types Of Wood Used

Window Types

Materials Used

Bulls Eye, Pigeon Box or Houdini Hatch

Exterior Doors

Side Hatches

Front & Back Covers

Sprayfoam

Oak throughout

Hopper

Aluminium

-

Front - Steel, Back - Steel

Yes x 2

Front cratch and cover, pram cover

## History Of Vessel

Boat Safety Certificate

Last Hull Blacking

Anodes

Further Maintenance

Recent Survey

Additional Information

May 2025

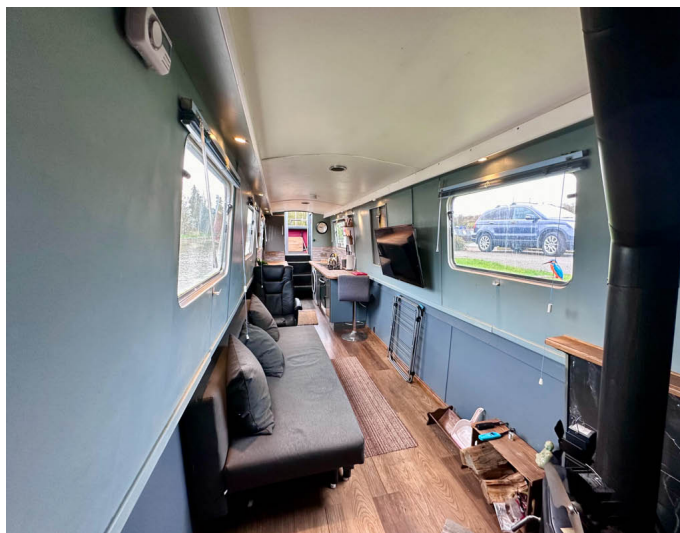
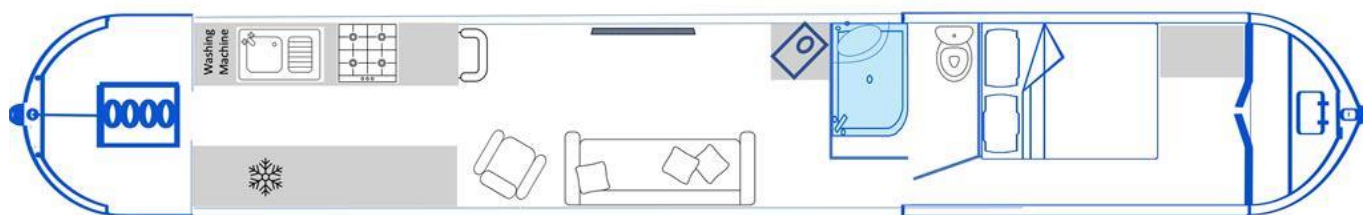
2022

May 2021

New wiring throughout boat

March 2022

-







Whilton Locks, Near Daventry,  
Northants, NN11 2NH  
01327 842577  
sales@whiltonmarina.co.uk  
www.whiltonmarina.co.uk

**For further information please see  
a member of the sales team.**

It is the responsibility of the buyer to ensure that all particulars given in the course of the purchase of the boat are accurate. Such particulars are intended only as a guide and do not constitute a term of any contract.

